

West Lake Buffum Road

Ft. Meade, FL • Polk County

77.77 +/- acres

*Conveniently located
between Ft. Meade
and Lake Wales*

Land · Commercial · Conservation · Land Management
5120 S. Lakeland Drive, Suite 3 · Lakeland, FL 33813
Phone: 863-648-1528 · Toll Free: 1-877-518 LAND
www.saundersrealestate.com

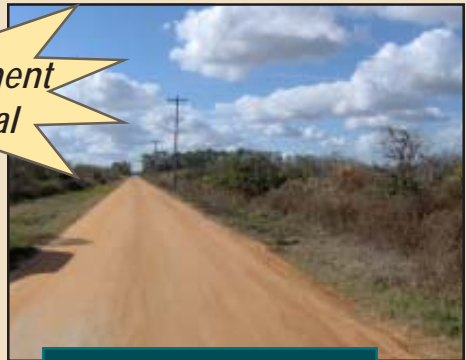


**COLDWELL
BANKER
COMMERCIAL**

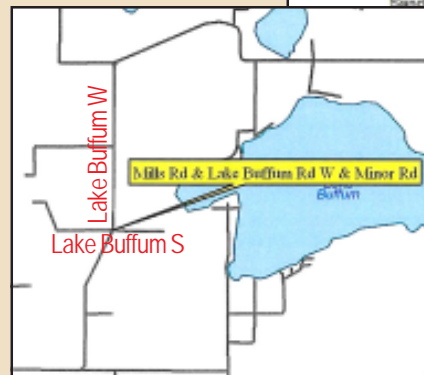
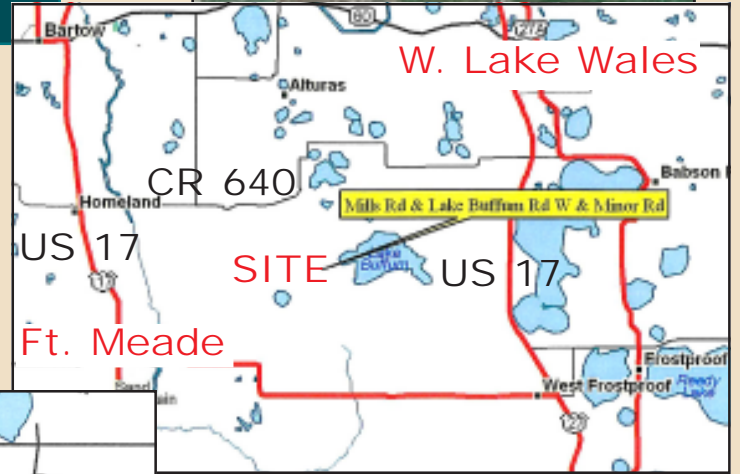
**SAUNDERS
REAL ESTATE**

West Lake Buffum Road • 77.77 +/- acres • Ft. Meade, FL • Polk County

Acres: 77.77 +/- Acres
Price: \$600,000
Location: Mills & Lake Buffum Road West
 Ft. Meade, FL
Road Frontage: 2,640 +/- ft. paved frontage
 1,320 +/- ft. clay frontage
Land Use: A/RR; Ag/Residential Rural; 1 unit to 5 acres
 Excellent for citrus, farm, cattle, development
Utilities: TECO
Soils: Ridge soils
Uplands: 100% uplands
Water: Well/septic
 Property has 10" well, pump, motor
 Micro-jet 12' x 30' space - green jets
Tax Parcel ID: 26-31-10-000000-021010
Lat/Long: N 27° 47' 43.9"
Lat/Long: W 081° 41' 43.6"
Legal Description: East 1/2 of the SE 1/4 of Section 10,
 Township 31S, Range 26E; Polk County
Other: This is an abandoned citrus grove. Citrus trees
 may or may not be salvageable



Minutes to Central Florida Attractions



- Driving Directions from US 27:**
- From US 27 and CR 640 (Alturas Babson Park Cutoff) go west on CR 640 for 3.6 miles
 - Keep left on Lake Buffum Road (N) for 6.5 miles
- Driving Directions from US 17:**
- From US 17 and CR 640 between Bartow and Ft. Meade (Homeland) go east on CR 640 (Lake Hendry Road) for 4.8 miles
 - Keep straight onto Lake Hendry Road 4.1 miles and turn left (east) onto Lake Buffum Road (S) for 1.7 miles.
 - Continue straight on Lake Buffum Road W for 1.6 miles

863-648-1528 • www.saundersrealestate.com

While every attempt is made to provide as accurate information on this property offering as possible, COLDWELL BANKER COMMERCIAL SAUNDERS REAL ESTATE (CBCSRE) does not guarantee the accuracy thereof. Buyer shall rely entirely on their own information and inspection of property and records. © Copyright Coldwell Banker Commercial Saunders Real Estate, All Rights Reserved, Worldwide: All content inclusive of text, graphics, images, and logos is the property of CBCSRE. You may not copy this material by any means (including electronic copies), reproduce, duplicate, scan, modify, publish, transfer, use on your own website, distribute, or create a derivative work without receiving written permission from CBCSRE.