

# Saunders Landbook

LAND LISTINGS CATALOG

FALL 2022







# More Than Solar...

“

Dean Mead is one of the best firms we have ever worked with (we have worked with many). Given their wide ranging track record working on numerous types of natural gas projects, renewable energy and environmental complexities, selecting Dean Mead to represent us was an easy choice for Full Circle Dairy's renewable natural gas project.

- Jake Willis at Full Circle Dairy



**The Dean Mead Team has evolved to cover a variety of renewable energy projects, including capturing renewable natural gas generated from dairy farms!**

Our Agribusiness and Solar & Renewable Energy Teams advise landowners, developers and investors on how they can realize value from their land through a variety of sources, such as solar projects, renewable natural gas, conservation easements, carbon credits, and more. We have over 40 years of experience representing all forms of agribusiness, from multigenerational family farms to multi-national entities with agribusiness operations throughout Florida and the United States. Our team stays on top of the latest agribusiness and renewable energy trends to advise our clients on the cutting-edge technologies within their industry.

*For more information contact Michael Minton, Chair of the Dean Mead Agribusiness and Solar & Renewable Energy Teams.*

**DEAN|MEAD**

[www.deanmead.com](http://www.deanmead.com) | (877) 363-8992

Offices in Ft. Pierce, Orlando, Stuart (by appointment), Tallahassee, Viera/Melbourne, and Vero Beach



# Natural Resource Planning Services

*For land, timber, and wildlife resources,  
we have the experience and expertise you need.*

## ARBORIST SERVICES

- Tree Appraisals
- On-site Tree Preservation
- Pre-development Inventories

## ENVIRONMENTAL SERVICES

- Conservation Easements
- Mitigation Bank Consulting and Management
- Prescribed Burning

## FORESTRY SERVICES

- Timber Inventory and Valuation
- Ecosystem Restoration
- Investment Analysis

## WILDLIFE SERVICES

- Hunt Lease Management for over 700,000 acres across the southeast
- Wildlife Management Plans
- Wildlife Habitat Enhancement

Lake City, FL • 386.438.5896

San Antonio, FL • 352.588.2580

Tallahassee, FL • 850.570.5963

Thomasville, GA • 229.726.9088

# Landbook

## FALL LISTINGS 2022

### TABLE OF CONTENTS

Springs.....	4
Timber & Recreation.....	5
Ranch & Recreation.....	10
Acreage.....	14
Acreage Homesite.....	15
SWFWMD.....	18
Development.....	19
Residential Development.....	20
Farm & Nursery.....	24
Citrus.....	26
Georgia.....	28
Advisor Contacts.....	27

### ABOUT

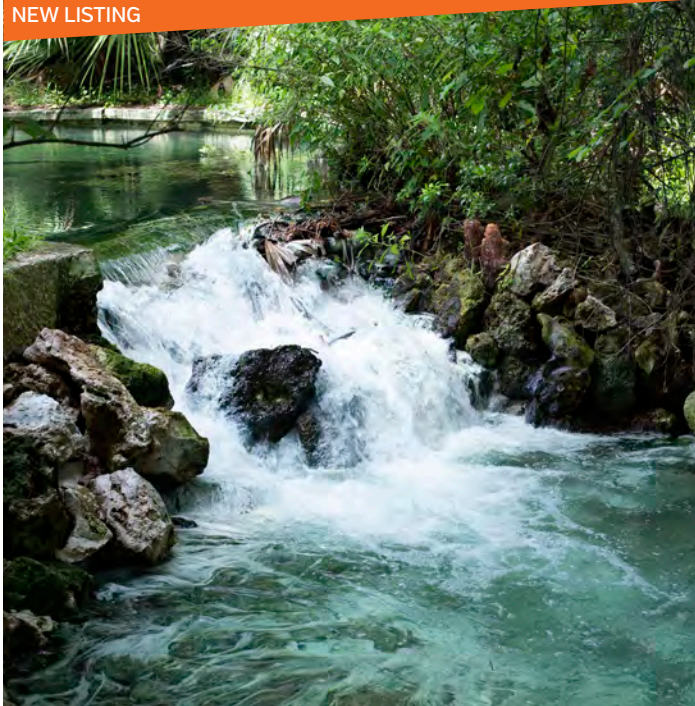
SVN | Saunders Ralston Dantzler Real Estate is a full-service land and commercial real estate brokerage with over \$4 billion in transactions representing buyers, sellers, investors, institutions, and landowners since 1996. We are recognized nationally as an authority on all types of land, including agriculture, ranch, recreation, residential development, and international properties. Our commercial real estate services include, property management, leasing and tenant representation, valuation, business brokerage, and advisory and counseling services for office, retail, industrial, and multifamily properties. Our firm also features an auction company, forestry division, international partnerships, hunting lease management, and extensive expertise in conservation easements. Located in Florida and Georgia, we provide proven leadership and collaborative expertise backed by the strength of the SVN® global platform. To learn more, visit [SVNsaunders.com](https://SVNsaunders.com).





# SPRING LISTINGS

NEW LISTING



## ORANGE SPRING & BOTTLING FACILITY BUSINESS FOR SALE

*Fort McCoy, FL • \$15,000,000 • 67 ± Acres*

- 25,000 SF industrial space for water processing, bottling, and distribution
- Orange Spring - Emits 2 million gallons per day
- Consumptive use permit for 200,000 gallons per day

*Tyler Davis & Jeremiah Thompson*

NEW LISTING



## APOPKA SPRING LAKEFRONT ACREAGE

*Lake County, FL • Call for pricing • 22 ± Acres*

- Waterfront on Apopka Spring - 2nd magnitude spring
- 2500 ± FT of Frontage on Lake Apopka/Gourd Neck Bay
- Excellent potential for a future homesite

*Jeremiah Thompson & Tyler Davis*

NEW LISTING



## HISTORIC INDIAN SPRING

*Largo, FL • \$2,750,000 • 1.4 ± Acres*

- Freshwater spring
- 2,500 ± FT from the Gulf of Mexico
- Large lot with 3 bedroom/3 bathroom residence

*Jeremiah Thompson & Tyler Davis*



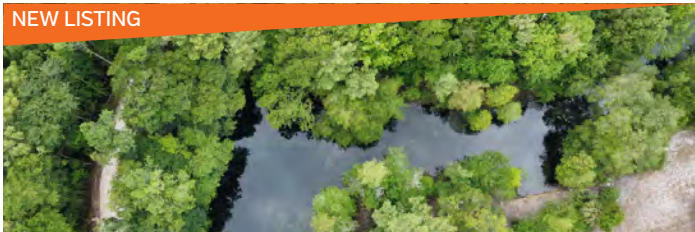
## NATURE COAST SPRINGS

*Spring Hill, FL • \$2,700,000 • 37.72 ± Acres*

- 1,300 ± FT of frontage on Fish Camp Road
- 680 ± FT on Cortez Boulevard (SR 550)
- 18 ± AC uplands 19 ± AC wetlands (including large mineral spring)

*John Holzaepfel & Greg Driskell*

NEW LISTING



## SUN SPRING WATERFRONT ACREAGE

*Gilchrist County, FL • Call for pricing • 4 ± Acres*

- Waterfront on Sun Springs - 2nd magnitude spring
- 900 ± FT of water frontage
- Spring run flows into the Suwannee River

*Jeremiah Thompson & Tyler Davis*



## CRYSTAL RIVER - JURASSIC SPRING LOT

*Crystal River, FL • \$985,000 • 0.23 ± Acres*

- Located in the heart of Crystal River
- Property looks directly into Jurassic Springs
- Short kayak ride to Hunter Springs, Three Sisters Spring, and King Spring

*Tyler Davis & Jeremiah Thompson*



# TIMBER & RECREATION LISTINGS



## KNIGHT TAYLOR RANCH

*Tennille, FL • \$32,812,500 • 12,006 Total Acres*

- 3,041 AC pasture
- 419 AC under pivot irrigation
- 3,212 AC cleared for conversion to pasture or reforestation
- 643 AC of merchantable planted pine
- 15 minutes of Steinhatchee and the Gulf of Mexico in Taylor County
- Perimeter of property is completely high fenced
- Cattle grazing, timber production, and hunting

*Dean Saunders, Tony Wallace, Greg Driskell & Dusty Calderon*



## GOOSKI TIMBERLANDS

*Fort McCoy, FL • \$19,563,500 • 7,114 ± Acres*

- Prime timber property
- Excellent recreational potential
- Close to Ocala horse country

*Dean Saunders, Tony Wallace, Greg Driskell & Dusty Calderon*



# TIMBER & RECREATION LISTINGS

## NEW LISTING



### FT. MCCOY TIMBERLANDS

Fort McCoy, FL • \$17,633,700 • 5,598 ± Acres

- Over \$5 million planted pine value
- Good timber investment tract
- Productive soils for pines
- Improved internal road network

Dean Saunders, Tony Wallace, Greg Driskell & Dusty Calderon

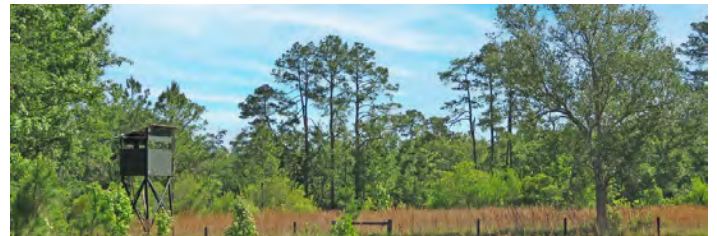


### KNIGHT TAYLOR RANCH - SOUTH TRACT

Tennille, FL • \$12,233,100 • 3,707 ± Acres

- Pastures, merchantable planted pines
- Irrigated cropland, and multiple cleared areas for potential conversion to pasture or reforestation

Dean Saunders, Tony Wallace, Greg Driskell & Dusty Calderon



### KNIGHT TAYLOR RANCH - MIDDLE TRACT

Tennille, FL • \$12,438,400 • 4,784 ± Acres

- Pastures, irrigated cropland, bottomland hardwoods, and is a mixture of wetlands
- The cleared areas can be for potential conversion to pasture or reforestation

Dean Saunders, Tony Wallace, Greg Driskell & Dusty Calderon



### ANDREWS SOUTH RANCH

Chiefland, FL • \$4,432,750 • 1,017 ± Acres

- Premier Florida ranch
- High and dry
- Fenced and crossed-fence with cattle watering wells
- Close to urban amenities

Dean Saunders, Tony Wallace, Greg Driskell & Dusty Calderon



### KNIGHT TAYLOR RANCH - NORTH TRACT

Tennille, FL • \$8,614,200 • 3,516 ± Acres

- 627 acres of pasture
- 1,313 acres cleared for conversion to pasture or reforestation
- 68 acres of merchantable planted pine

Dean Saunders, Tony Wallace, Greg Driskell & Dusty Calderon



# TIMBER & RECREATION LISTINGS



## CITRA TIMBERLANDS

Citra, FL • \$4,351,600 • 1,892 ± Acres

- Prime timber property
- Excellent recreational potential
- Close to Ocala horse country

Dean Saunders, Tony Wallace, Greg Driskell & Dusty Calderon



NEW LISTING

## INTERLACHEN TIMBER AND HUNTING TRACT

Interlachen, FL • \$2,475,000 • 707 ± Acres

- Well stocked planted pine stands
- Good game populations
- Good access
- Excellent timber market with 62% uplands

Dean Saunders & Tony Wallace, CF



## FT. MCCOY TIMBER AND HUNTING - 422 ACRES

Fort McCoy, FL • \$1,899,000 • 422 ± Acres

- Merchantable planted pines
- Highly productive soils
- Excellent hunting area
- Paved road frontage

Dean Saunders, Tony Wallace, Greg Driskell & Dusty Calderon



## GOOSKI NE 100TH AVE

Fort McCoy, FL • \$180,000 • 39.92 ± Acres

- Recreational tract
- Mature planted pine and natural hardwoods
- Great place for a cabin in the woods
- Nearby amenities of Ocala and Silver Springs

Dean Saunders, Tony Wallace, Greg Driskell & Dusty Calderon

## STRONGER YIELDS.

Partner with the most experienced agricultural lender in the industry.

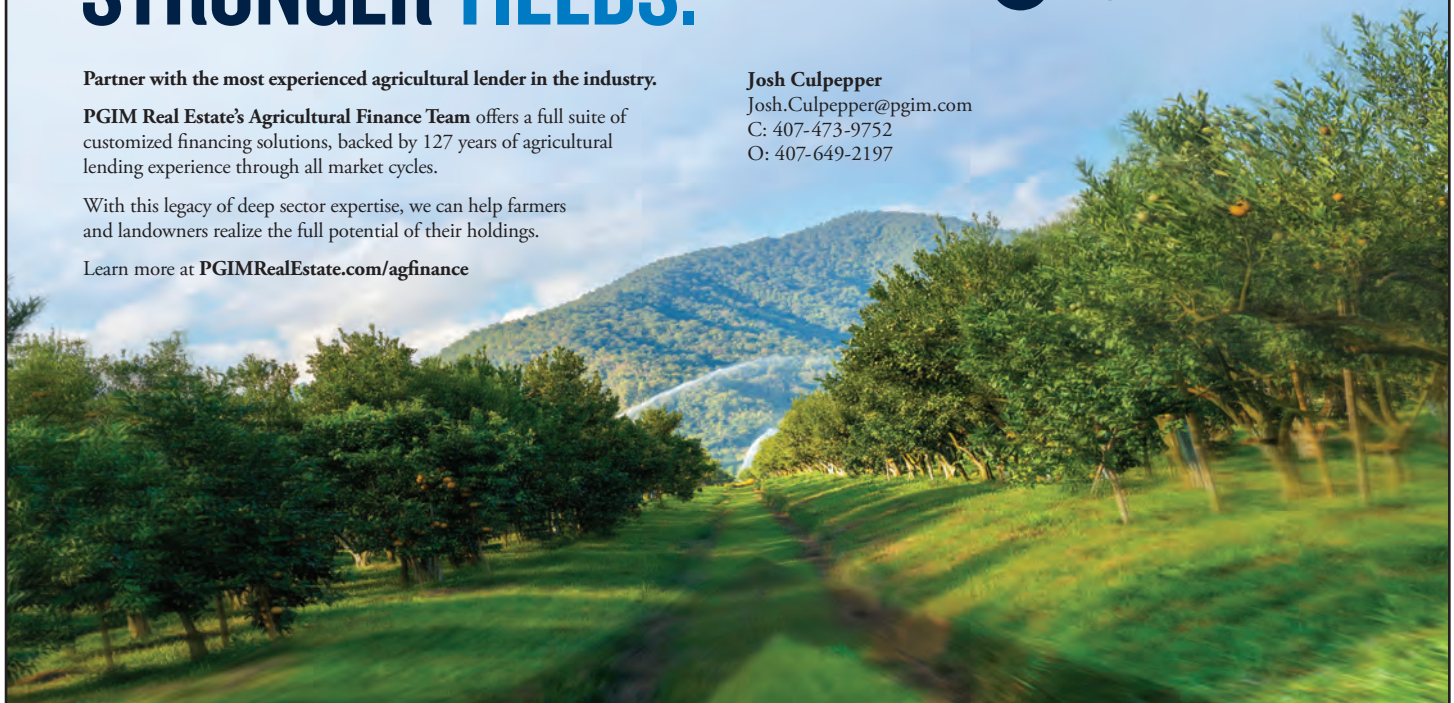
PGIM Real Estate's Agricultural Finance Team offers a full suite of customized financing solutions, backed by 127 years of agricultural lending experience through all market cycles.

With this legacy of deep sector expertise, we can help farmers and landowners realize the full potential of their holdings.

Learn more at [PGIMRealEstate.com/agfinance](https://www.pgimrealestate.com/agfinance)



Josh Culpepper  
Josh.Culpepper@pgim.com  
C: 407-473-9752  
O: 407-649-2197



© 2022 PGIM, Inc. ("PGIM") is the primary asset management business of Prudential Financial, Inc. PGIM Real Estate operates through PGIM, a registered investment advisor. Prudential, the Prudential logo and the Rock symbol are service marks of Prudential Financial, Inc. and its related entities, registered in many jurisdictions worldwide.



# TIMBER & RECREATION LISTINGS

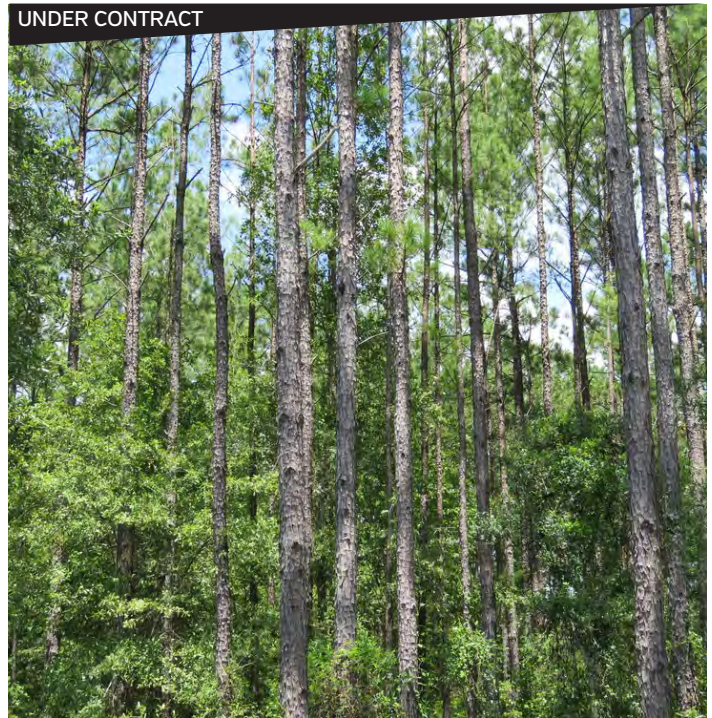


## APALACHEE TIMBERLANDS

Monticello, FL • \$6,300,000 • 1,008 ± Acres

- Adjoins state wildlife refuge
- Excellent water features
- Great conservation easement potential
- Can be subdivided into 500 ± acre tracts

Bryant Peace, ALC & Tony Wallace, CF



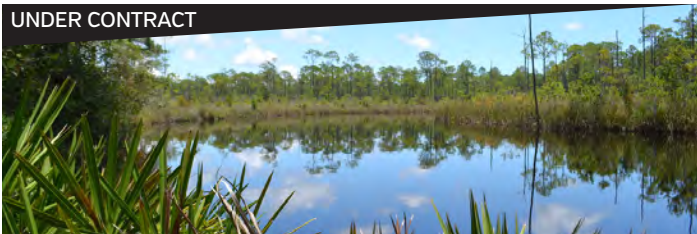
UNDER CONTRACT

## MADISON I-10 TIMBER TRACT

Madison, FL • \$2,000,000 • 450 ± Acres

- Good deer and turkey populations
- Excellent access
- Commercial potential

Greg Driskell



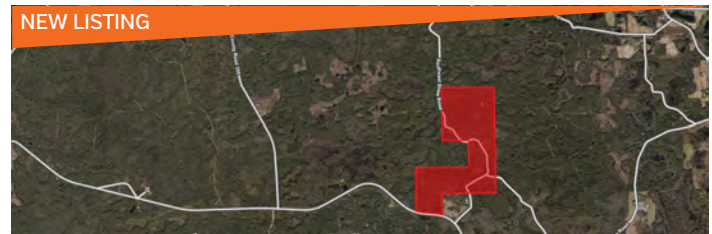
UNDER CONTRACT

## WHISKEY GEORGE CREEK TIMBERS

Eastpoint, FL • \$1,310,000 • 370 ± Acres

- Waterfront property
- Hardtop access
- Surrounded by Conservation Land

Jeremiah Thompson & Bryant Peace, ALC



NEW LISTING

## MAYO TRACT SOUTH

Mayo, FL • \$1,035,450 • 351 ± Acres

- Merchantable planted pine planted in 2000 and natural timber
- Excellent hunting, recreation and timber investment tract,
- Frontage on a county maintained graded road as well as a paved road, just south of Mayo, FL

Matthew Simpson, CF & Tony Wallace, CF

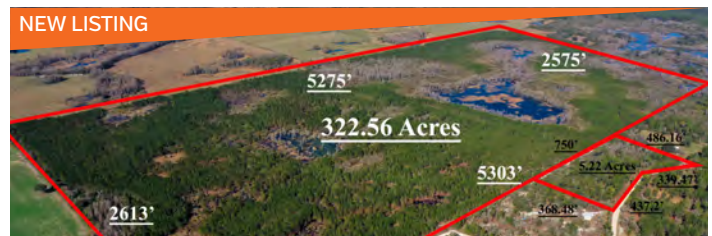


## FORT GADSDEN CREEK TIMBERLANDS

Eastpoint, FL • \$1,403,600 • 320 ± Acres

- Water frontage along Fort Gadsden Creek
- Timberland, recreation & hunting opportunities
- Surrounded by Conservation Land

Austin Fisher & Jeremiah Thompson



NEW LISTING

## GILCHRIST WACASASSA SE 91ST

Gilchrist, FL • \$1,600,000 • 327 ± Acres

- Recreation tract with Whitetail Deer and Osceola Turkey
- Planted pines 12yr old roughly 150 acres
- Close to Gainesville and major medical health care
- Frontage on two county maintained roads

Chad Johnson



# TIMBER & RECREATION LISTINGS



## TAYLOR POND HUNTING, RECREATION, & TIMBER TRACT

Perry, FL • \$299,000 • 156 ± Acres

- Hunting & Recreation
- Excellent Hunting Habitat
- Deer, Hogs, and Ducks

Jeremiah Thompson & Jeff Bewsher

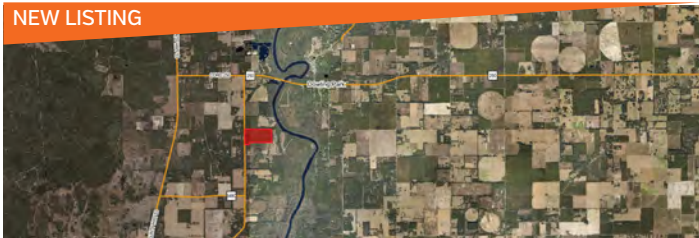


## SOUTH MADISON WOODLANDS

Greenville, FL • \$395,000 • 106 ± Acres

- Conveniently located within an easy drive of Tallahassee or Perry
- Whitetail deer and wild turkeys love the oak hammocks
- Prime acreage for the sportsman

Greg Driskell

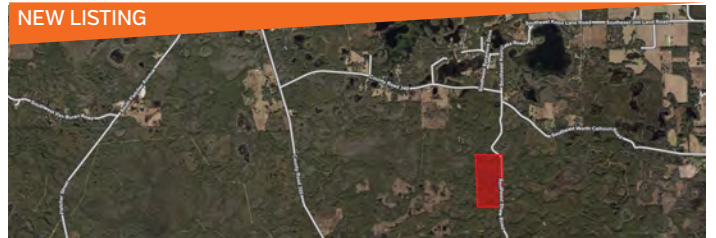


## DAY TRACT SOUTH

Day, FL • \$389,500 • 82 ± Acres

- Upland tract with 13 year old planted pines
- Approximately 47 acres, 35 acres in the process of reforestation
- Frontage on a paved county road, northeast of Day, Florida

Matthew Simpson, CF & Tony Wallace, CF



## MAYO TRACT NORTH

Mayo, FL • \$320,000 • 80 ± Acres

- Merchantable planted pine planted in 2003 and natural timber
- Excellent hunting, recreation and timber investment tract
- Frontage on a county maintained graded road
- South of Mayo, Florida

Matthew Simpson, CF & Tony Wallace, CF



## WASH POND TIMBER AND HUNTING TRACT

Mayo, FL • \$420,000 • 69 ± Acres

- Mature planted pines ready for harvest
- 83% Uplands
- Two ponds - 3.5-acre 3/4-acre, 3/4-acre food plot
- Frontage on CR-340

Matthew Simpson, CF & Tony Wallace, CF



## LIVE OAK WEST

Live Oak, FL • \$385,000 • 77 ± Acres

- Upland tract with 13 year old planted pines, pine straw raking
- Frontage on both paved road and county maintained graded road
- Southwest of Live Oak, Florida

Matthew Simpson, CF & Tony Wallace, CF

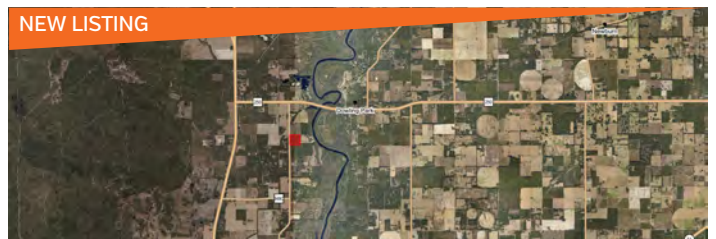


## GADSDEN TIMBERLAND ACREAGE

Quincy, FL • \$268,600 • 68 ± Acres

- Great hunting
- Creek frontage
- Great access

Bryant Peace, ALC



## DAY TRACT NORTH

Day, FL • \$195,000 • 39 ± Acres

- upland tract
- 13 year old planted pines
- Frontage on paved county road, northeast of Day, FL

Matthew Simpson, CF & Tony Wallace, CF



# RANCH & RECREATION LISTINGS

NEW LISTING



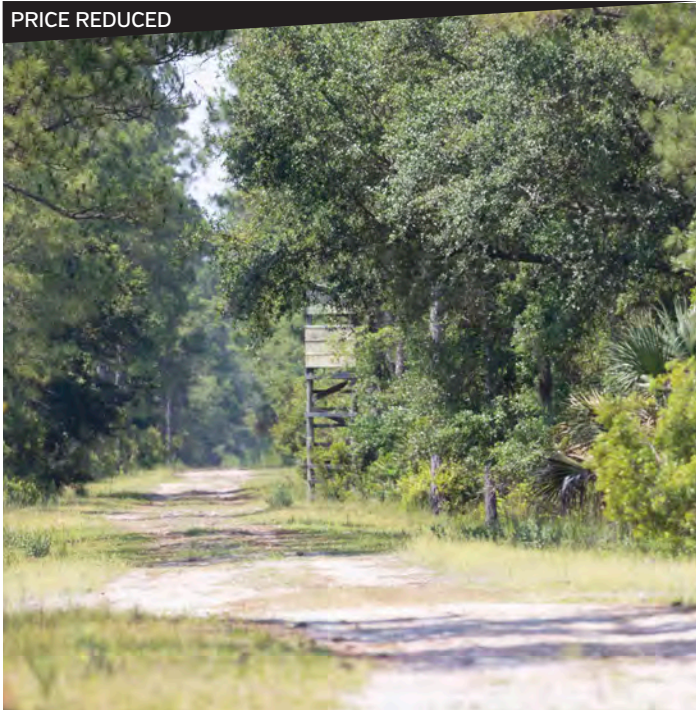
## LONG RIVER RANCH

*Arcadia, FL • \$15,000,000 • 1,025 ± Acres*

- 2.5 miles of frontage on the Peace River
- Game population: turkey, white-tail deer, and hogs
- Structures: Grand House - 13,343 SF, Dragonfly - 1,119 SF, Barn Workshop - 2,400 SF, Warehouse Barn - 3,360 SF, Barn/Office Storage - 2,575 SF

*Trent Saunders & Paul Meador*

PRICE REDUCED



## ROSS HAMMOCK RANCH

*Inglis, FL • \$11,000,000 • 1,218 ± Acres*

- Turn key, full-service exotic hunting ranch
- Main lodge is a log construction, very upscale, 5-bedroom, 3.5-bathroom
- 50% is in hardwood hammock

*Trent Saunders*

PRICE REDUCED



## ORANGE LAKE HISTORICAL PENINSULA

*Micanopy, FL • \$15,000,000 • 2,600 ± Acres*

- Across the lake from Marjorie Kinnan Rawlings State Park
- Prime lakefront property - over 2 miles of frontage on Orange Lake
- Property includes multiple homes, horse barn, and a 2,000 FT airstrip and hangar

*Dusty Calderon*



# RANCH & RECREATION LISTINGS

NEW LISTING



## HOLLY HILL RANCH AND RECREATION

*Zolfo Springs, FL • Call for pricing • 1,676 ± Acres*

- Vacant land in Hardee County
- Offering of six adjacent parcels, opportunity for agricultural use
- Located near highways such as US-98 and State Road 64, allowing for easy transportation
- Conservation easement

*Trent Saunders & Jesse Laluna*

NEW LISTING



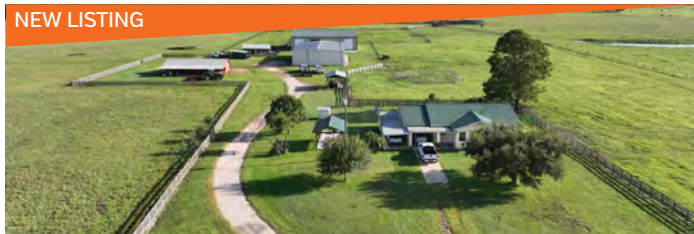
## POLK COUNTY RANCH AND BLUEBERRY FARM

*Polk City, FL • \$7,100,000 • 827 ± Acres*

- 30 acres of well-maintained blueberry farm
- Improved pasture with a light mix of woods
- Two (2) single-family homes
- Equipment barn, pole barn, and covered cowpens

*Jim Allen*

NEW LISTING



## PEACE VALLEY RANCH

*Fort Meade, FL • \$4,250,000 • 756 ± Acres*

- Well-managed working cattle ranch located in Central Florida
- Multiple hay fields
- Manager's home featuring 1,307 SF 2 bedroom/1 bathroom house
- 20 minutes from Fort Meade

*Daniel Lanier*

UNDER CONTRACT



## LEVY COUNTY EXOTIC GAME RANCH

*Morrison, FL • \$6,000,000 • 1,470 ± Acres*

- 1,378.39 acres under conservation easement with a 20-acre building envelop at the old homestead
- 91.81 acres not under easement where the homes and barns are located
- Turn key operation with multiple exotic breeds

*Dusty Calderon*

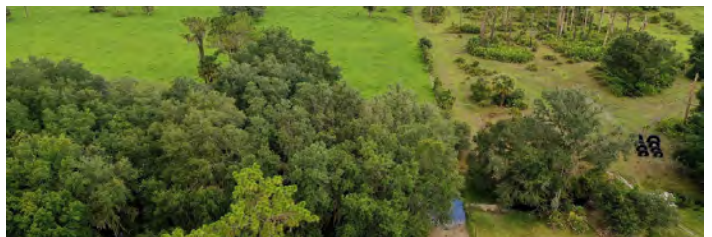


## JUPITER RECREATIONAL TRACT

*Jupiter, FL • \$5,900,000 • 640 ± Acres*

- Borders the 17,000-acre Jones Hungryland Wildlife Management Area
- Mitigation banking potential
- Many dirt roads and ATV trails provide easy access

*Bo Jahna & Josh Sheppard*



## THE RANCH AT MOSSY ISLAND

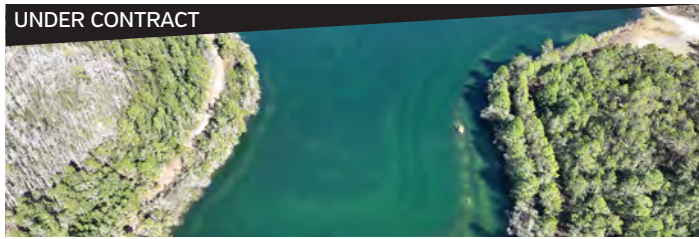
*Myakka City, FL • \$12,000,000 • 433 ± Acres*

- Working cattle ranch has been meticulously maintained and operated for decades
- Bordered by the Myakka State Park and provides excellent hunting

*Daniel Lanier*



# RANCH & RECREATION LISTINGS



## STATE ROAD 44 INVESTMENT AND RECREATIONAL TRACT

*New Smyrna Beach, FL • \$2,927,250 • 650 ± Acres*

- 30 ± acre lake great for fishing
- Wooded areas are comprised of piney woods with small dirt roads
- Countless recreational opportunities
- Can be accessed easily from Orlando, Sanford, and the East Coast

*Zeb Griffin, ALC*



## BROWNING RANCH EAST

*Webster, FL • \$2,062,500 • 275 ± Acres*

- Outdoor enthusiast dream with fishing, hunting, and recreational opportunities
- Stunning elevation changes and great views over the two large lakes
- Minutes from Highway 50 and sits just outside Webster

*Zeb Griffin, ALC*



## HIGHWAY 98 RANCH AND RETREAT

*Okeechobee, FL • \$1,688,850 • 242 ± Acres*

- 1,100 FT of frontage on HWY 98
- Ideal mix of pasture and woods catering to both the hunting enthusiast and cattle rancher

*Keat Waldron, ALC*



## SUWANNEE COUNTY AG LANDS

*Wellborn, FL • \$1,404,000 • 216 ± Acres*

- Includes 216 acres of agricultural fields currently leased for peanuts
- 95-acres of the property are irrigated with two pivots
- Great access to the property

*Jeff Bewsher*



## ALAPAHA RIVER HUNTING AND RECREATION TRACT

*Jasper, FL • \$531,900 • 197 ± Acres*

- Two miles of river frontage
- Pristine Florida forest
- Unlimited recreational activities

*Jeff Bewsher & Tony Wallace, CF*



## SEBRING 160 ACRES

*Sebring, FL • \$4,000,000 • 160 ± Acres*

- Good location for a light industrial use
- Potential for some sort of residential development
- Mostly cleared, flat and uplands

*Clay Taylor, ALC & David Hitchcock ALC, CCIM*



## CHARLOTTE COUNTY HUNTING TRACT

*Punta Gorda, FL • \$1,248,000 • 158 ± Acres*

- Acreage for a homesite
- Creek at the back of the property
- Property is mostly fenced

*Eric Hoyer, CF & Jeff Bewsher*



## WALDO 301 NORTH TRACT

*Waldo, FL • \$1,420,000 • 149 ± Acres*

- Pastures fenced and cross-fenced
- Hardwood hammocks, creek, and pond
- Vintage 1929 farmhouse with a 7,500 SF shop/barn
- 3,300 FT frontage on US-301
- Possible seller financing

*Tony Wallace, CF & Greg Driskell*



# RANCH & RECREATION LISTINGS



## FOX LAKE WOODS

Chiefland, FL • \$476,000 • 141 ± Acres

- Great hunting tract. good timber-growing land
- Gated, private community with well-maintained roads

Greg Driskell



## RUTLAND RANCH AND RECREATIONAL TRACT

Inverness, FL • \$989,340 • 132 ± Acres

- 132 ± acres with great hunting and recreational potential
- Consist of improved pasture, oak hammocks, and cypress heads and ponds
- Adjoins Southwest Florida Water Management District holdings on 2 sides

Zeb Griffin, ALC



## ALACHUA COUNTY HUNTING TRACT

Waldo, FL • \$475,000 • 128 ± Acres

- Excellent 128-acre hunting tract
- Known for producing trophy bucks
- Beautiful mature hardwood and cypress timber
- 4,000 feet of frontage on both banks of the Santa Fe River

Greg Driskell & Tony Wallace, CF

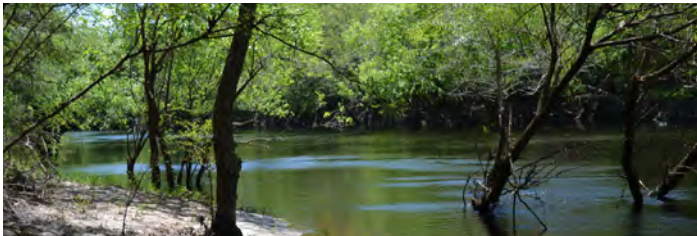


## HOLMES COUNTY RECREATIONAL TRACT

Bonifay, FL • \$372,000 • 120 ± Acres

- 120 ± acres of planted pines, mixed hardwoods, and pastureland
- Two ponds and a small creek which provides fantastic wildlife habitat
- Two miles from Bonifay City limits
- Endless recreational opportunities

Austin Fisher



## ST. MARY'S RIVERFRONT PROPERTY

Bryceville, FL • \$999,000 • 70 ± Acres

- Riverfront on St. Mary's River
- Recreation and hunting
- 3 bedroom 2 bathroom home with a view
- Remainder right

Jeff Bewsher



## WHITE SUWANNEE COUNTY PROPERTY

Live Oak, FL • \$523,950 • 49 ± Acres

- 100% uplands
- Across the street from Suwannee River State Park
- Adjacent to the property is a solar project and chicken processing facility

David Genho



## CHIEFLAND PACKING SHED NORTHWEST 10TH AVENUE TRENTON

Trenton, FL • \$350,000 • 11 ± Acres

- Packing barn
- Loading docks
- Good pastures

Greg Driskell



## OKEECHOBEE 10 ACRE RECREATIONAL RETREAT

Okeechobee, FL • \$150,000 • 10 ± Acres

- 3 miles outside the city limits of Okeechobee
- Phenomenal recreation and hunting potential
- Natural wildlife corridor

Keat Waldron, ALC



# ACREAGE LISTINGS

## NEW LISTING



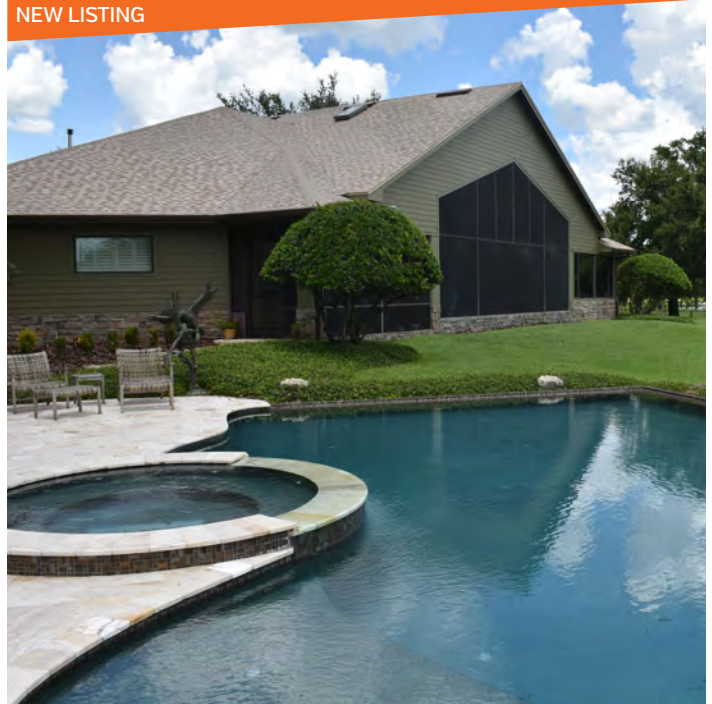
### GILCHRIST COUNTY MINING ACREAGE

*Trenton, FL • \$7,500,000 • 240 ± Acres*

- Income from an operating sand mine
- \$18,000-\$22,000/month
- Beautiful Florida land
- Great income upside for the mine

*R. Todd Dantzler, CCIM*

## NEW LISTING



### BARTOW LAKEFRONT ESTATE

*Bartow, FL • \$5,000,000 • 222 ± Acres*

- Idyllic property
- 5,858 ± SF house with 3,687 ± SF of living space built in 2000
- Includes acres of open pasture & two lakes and much more>Great views of two lakes

*Clay Taylor, ALC & David Hitchcock ALC, CCIM*



### PERRY CITRUS GROVE DEVELOPMENT ACREAGE

*Perry, FL • \$2,981,000 • 271 ± Acres*

- Opportunity zone property
- 271 ± acres of vacant development land
- Located within the city limits of Perry
- Neighbored by multifamily housing

*Austin Fisher & Daniel Lanier*



### 292 WATER HOLE ROAD

*Frostproof, FL • \$1,620,000 • 135 ± Acres*

- Currently used as a Dairy / Feedlot
- Privacy for recreation
- Former citrus grove
- Great for family compound with horses

*R. Todd Dantzler, CCIM*

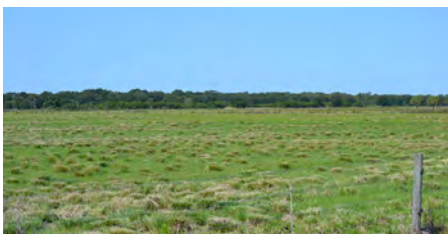


### MARSH RANCH - RANGELAND RESERVE

*Vero Beach, FL • \$1,350,000 • 781 ± Acres*

- 746 acres under WRP Conservation Easement. Includes 2,250 SF office
- Fenced and cross fenced
- 1 mile of SR60 frontage

*Jeff Cusson, CCIM*



### FLYING S RANCH

*Kenansville, FL • \$4,200,000 • 381 ± Acres*

- Existing 100 FT wide, 3,200 FT turf runway with 800 FT runway threshold
- Centrally-located
- Proposed rural airport and private hangers

*Clay Taylor, ALC & David Hitchcock ALC, CCIM*



### LAKE YALE ACREAGE IN UMATILLA

*Umatilla, FL • \$988,000 • 74 ± Acres*

- 54.4 acres and 19.8 acre parcels
- 16-acre lake which is shared with the neighboring property
- 20 acres include tall, beautiful trees

*Trish Leisner, CCIM*



### ESTERO BAY DEVELOPMENT

*Fort Myers, FL • \$3,750,000 • 42 ± Acres*

- Two access points. One access point is through the current owner residence, which is included in the sale
- Second access point is through an ingress

*Josh Sheppard & Bo Jahna*



# ACREAGE HOMESITE LISTINGS



## ENTRELAGOS

Windemere, FL • \$25,000,000 • 2.44 ± Acres

- Private peninsula
- Spa, Cabana bar, Sauna
- 12 bedrooms and 13.5 baths
- 14,706 ± SF total
- 11,048 ± SF gross living area
- Private pool, boat dock, and 24 hour guarded security
- Ornate hand carving throughout the home

Richard Dempsey, ALC, CIPS



## GULF COAST WATERFRONT DEVELOPMENT ACREAGE

Call for Offers • 35 ± Acres

- Waterfront property
- Developmental potential
- Close to world-famous Florida beaches

Austin Fisher & Jeremiah Thompson



## 5-ACRE SOUTH LAKELAND ESTATE

Lakeland, FL • \$2,449,000 • 4.82 ± Acres

- 7,144 ± SF total
- Built in 1999 - Last renovated in 2016
- Rare South Lakeland property with 6,300 SF pool home and a 900 SF guest house

Craig Morby



## LITTLE RIVER ESTATE

Wellborn, FL • \$1,269,550 • 43 ± Acres

- 5,000 SF home
- 3 bedroom & 4.5 bathroom
- 15 FT high ceilings
- Barn and horse paddocks

Jeff Bewsher



## OSCEOLA DEVELOPMENT ACREAGE

Saint Cloud, FL • \$2,676,000 • 26 ± Acres

- Residential development
- Paved road frontage
- Investment opportunity

Dusty Calderon & Keat Waldron, ALC



## OBERT ROAD AND I-10 ACREAGE

Cottdale, FL • \$179,000 • 21 ± Acres

- 22 ± AC in Jackson County, Florida
- 2,260 ± FT of frontage on Obert Road
- 930 ± FT of frontage on I-10

Jeremiah Thompson



## MYAKKA RIVER RANCHETTE

\$1,722,500 • 68.9 ± Acres

- 3,770 acres of frontage on Wauchula Road
- 840 FT of frontage on the Myakka River
- Just 45 minutes from Tampa and 30 minutes from Bradenton

Dusty Calderon



# ACREAGE LISTINGS



## FROSTPROOF RESIDENTIAL ACREAGE

*Frostproof, FL • \$125,000 • 4.98 ± Acres*

- Potential residential development
- Low density with a maximum of 4.5 units per AC 100% uplands
- Property can be purchased as three parcels

*Clay Taylor, David Hitchcock & Laura Wheeler*



## FARM ROAD RANCHETTE

*Sebring, FL • \$750,000 • 30 ± Acres*

- Secluded Farmland
- 4 bedroom/4 bathroom two-story home
- 5 minutes from Sebring Regional Airport
- Close to Central Florida attractions

*Laura J. Wheeler*



## PUTNAM PRESERVE

*Melrose, FL • \$675,000 • 20 ± Acres*

- Non-Profit Sanctuary business for sale
- Improved equestrian and livestock
- Fenced and cross-fenced with ponds
- Multiple barns, and storage areas
- Excellent road frontage

*Ken Rembert*



## WHITE WILLISTON PROPERTY

*Williston, FL • \$482,400 • 40 ± Acres*

- 100% uplands
- Standing timber
- Recreational or homesite possibilities
- Located near Ocala horse county

*David Genho*



## LAKE GENTRY RANCHETTE

*Saint Cloud, FL • \$1,550,000 • 18.29 ± Acres*

- Beautiful 18-acre ranchette that features lake frontage and a navigable canal leading to the lake
- Fenced for cattle

*Dusty Calderon & Trent Saunders*



## LAKE REEDY ESTATES

*Frostproof, FL • \$775,000 • 12.89 ± Acres*

- Able to annex into frostproof and subdivide
- Beautiful views of the lake and mature oaks that line the water
- Over 700 ± FT of water frontage on Lake Reedy

*Bo Jahna*



## SOUTHWEST POLK FARM AND HOMESITE

*Fort Meade, FL • \$319,000 • 18.77 ± Acres*

- Former citrus grove
- 6" well and electric pump
- Close to town

*Daniel Lanier*



## 9.77 ACRES IN MACCLENNY

*MacClenny, FL • \$295,000 • 9.77 ± Acres*

- Acreage for a homesite
- Creek at the back of the property
- Property is mostly fenced

*Eric Ammon, CCIM & Craig Morby*



## BABSON PARK GROVE & HOMESITES

*Babson Park, FL • \$225,000 • 9 ± Acres*

- Can be subdivided into two homesites
- 10 minutes south of Lake Wales
- 100% uplands & across the street from Crooked Lake

*Keat Waldron, ALC*



## 6.82 ACRE TROPICAL FISH FARM COMPLEX

*Dade City, FL • \$1,500,000 • 6.82 ± Acres*

- Impressive property includes a complex of well-managed grounds, facilities, equipment, and machinery
- Successful tropical fish farm with national clientele

*Steve Toner, MBA*



## 75 ACRES OF WETLAND FOR DEVELOPMENT MITIGATION

*St Petersburg, FL • \$450,000 • 75 ± Acres*

- In Tampa Bay for wetland mitigation
- Completed environmental audit available
- With new projects and new roadwork, this should be very instrumental in obtaining approvals

*Steve Toner, MBA*



## DEMILLE ROAD - WETLANDS 83 ACRES

*Polk City, FL • \$207,500 • 83 ± Acres*

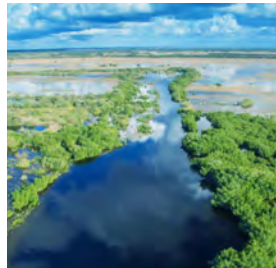
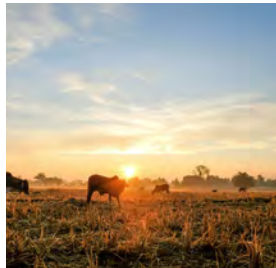
- 100% wetlands
- Mixed hardwood swamp
- No legal access

*Brian Beasley, CCA, CNLM*





*The government has its team of lawyers. You should too.*



**YOUR PROPERTY. OUR PURPOSE.**



**Gaylord  
Merlin  
Ludovici  
& Diaz**

**EMINENT DOMAIN LAWYERS**

5001 West Cypress Street, Tampa, Florida, 33607

813.221.9000

[www.gaylordmerlin.com](http://www.gaylordmerlin.com)



# SOUTHWEST FLORIDA WATER MANAGEMENT



**SOUTHWEST FLORIDA WATER MANAGEMENT  
DISTRICT: GREEN SWAMP EAST**

*Polk City, FL • \$499,999 • 226 ± Acres*

- Conservation land & recreational tract
- Abundant wildlife and ideal for hunting
- 3,200 FT frontage on Van Fleet Trail

*Zeb Griffin, ALC*



**SOUTHWEST FLORIDA WATER MANAGEMENT  
DISTRICT: ANNUTTELIGA HAMMOCK TRACT 5**

*Weeki Wachee, FL • \$252,000 • 39 ± Acres*

- Sold subject to a conservation easement
- Beautiful wooded homesites
- Abundant wildlife
- Space for recreational activities

*Zeb Griffin, ALC*



## Collective Strength. Accelerated Growth.

SVN® delivers commercial real estate brokerage solutions that accelerate client growth through the power of shared data, knowledge, and opportunities.

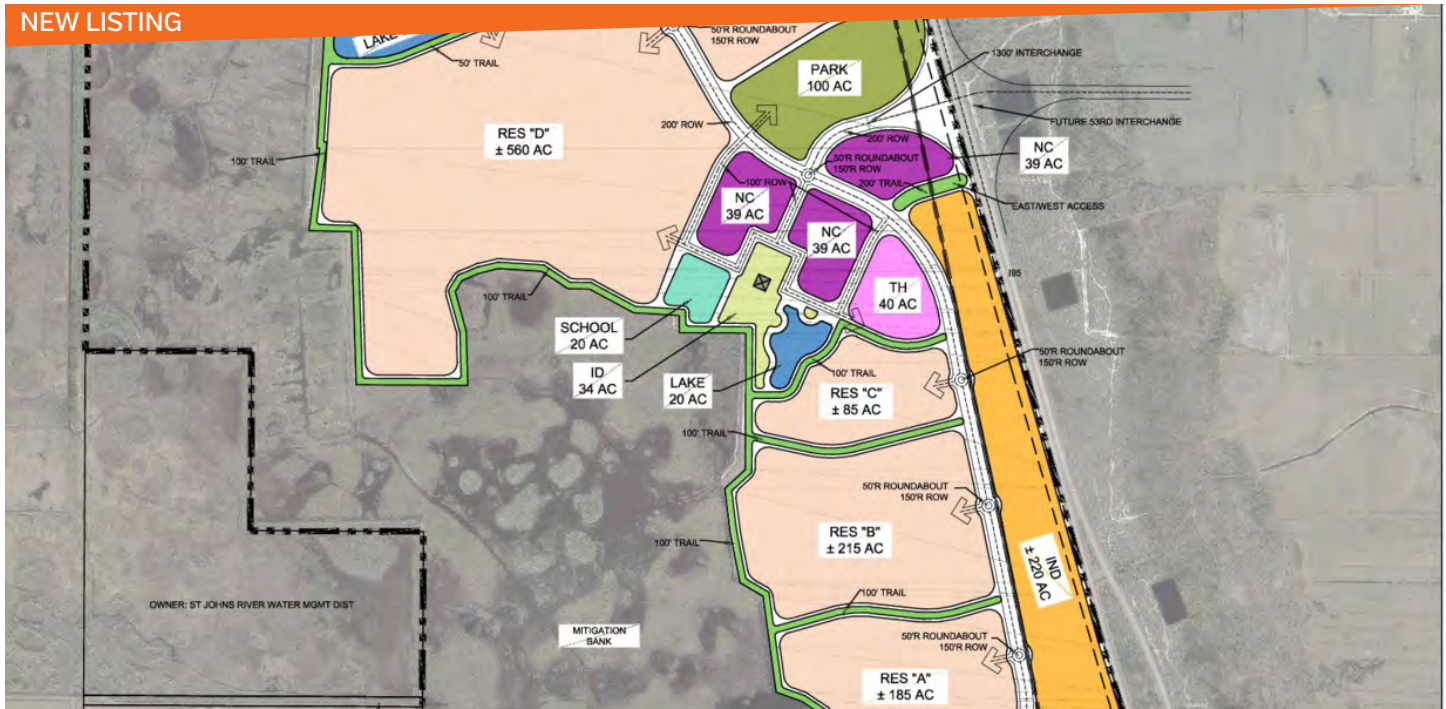
[WWW.SVN.COM](http://WWW.SVN.COM)





# DEVELOPMENT LISTINGS

## NEW LISTING



### I95 & HWY 60 BUSINESS PARK

Fellsmere, FL • Call for offers • 1,000 ± Acres

- I95 & highway 60 regional business park
- Industrial and Commercial
- Up to 750 acres of industrial & up to 250 acres of commercial

Bo Jahna, Dean Saunders, Jeff Cusson & Josh Sheppard

## NEW LISTING



### WHITE HIGHWAY 19 EAST

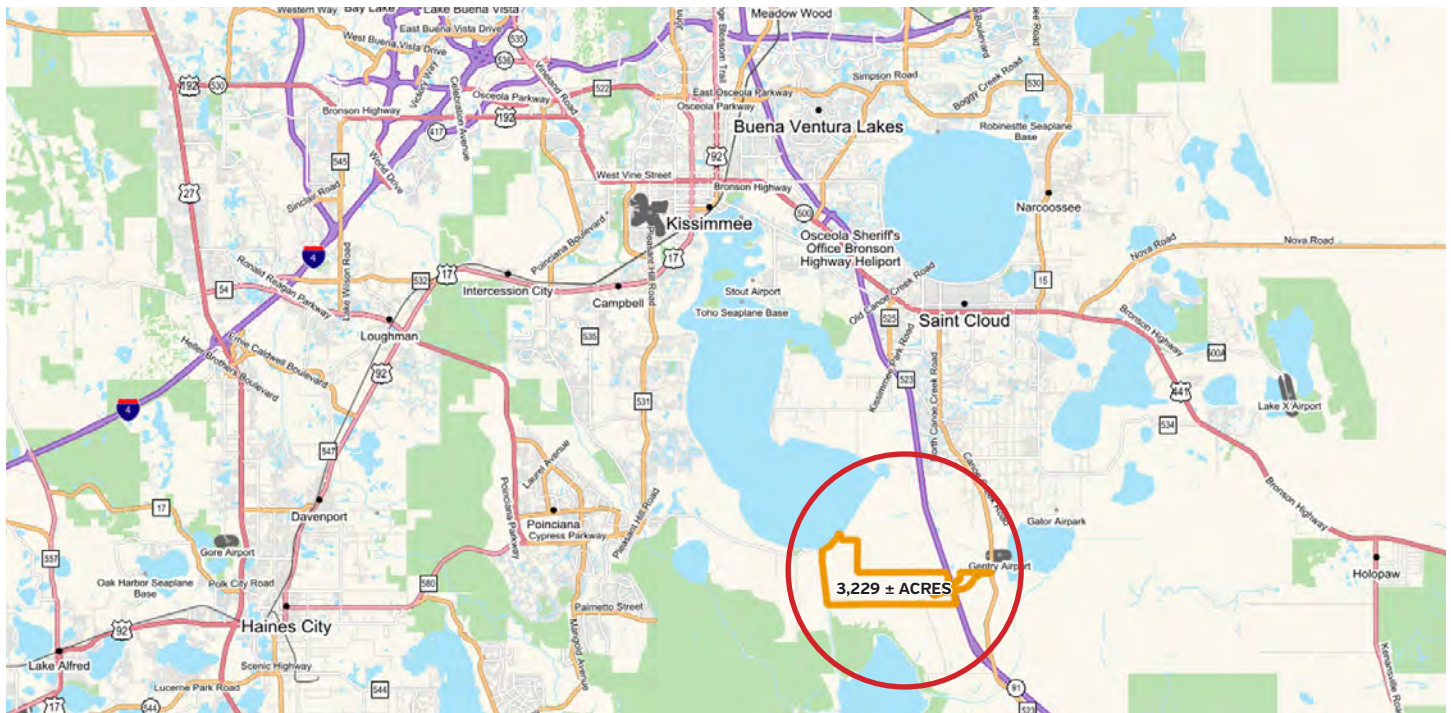
Chiefland, FL • \$4,242,000 • 60 ± Acres

- 100% uplands
- Frontage on Highway 19
- Within the City Limits of Chiefland

David Genho



# RESIDENTIAL DEVELOPMENT LISTINGS

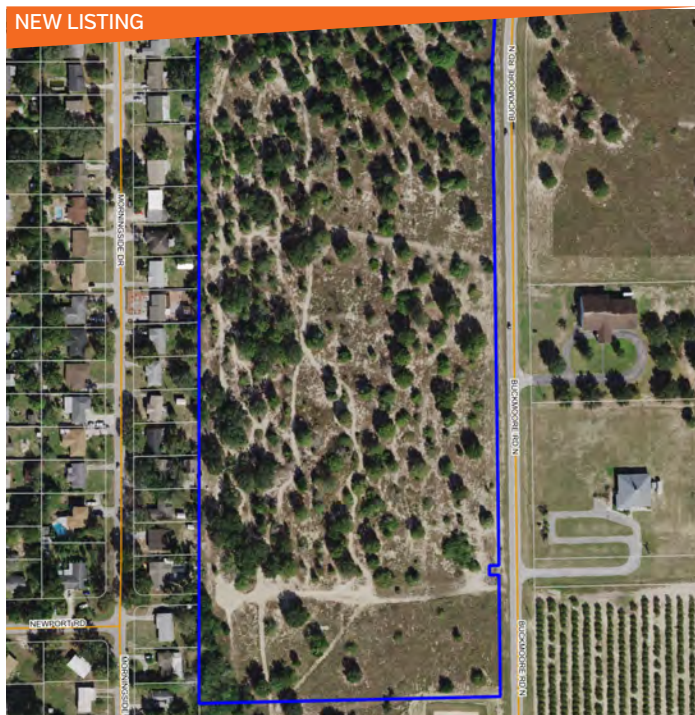


## SOUTH LAKE TOHO DEVELOPMENT TRACT

*Kenansville, FL • Call for pricing • 3,229 ± Acres*

- One of the last remaining large tracts of development land
- Multiple uses within the property, including commercial, industrial, single and multi-family residential
- Included in Osceola County master plan for development
- Future land use is mixed use

*Dusty Calderon & Dean Saunders ALC, CCIM*



## BUCKMOORE HEIGHTS DEVELOPMENT LAKE WALES

*\$3,000,000 • 6,000 ± Acres*

- 100 lots
- 100% uplands
- Located on Buckmoore Rd in Lake Wales

*David Hitchcock ALC, CCIM & Clay Taylor, ALC*



## 418 ACRES RESIDENTIAL DEVELOPMENT

*Leesburg, FL • \$12,000,000 • 418 ± Acres*

- Villages new development to be built same location
- Florida Turnpike within a close drive
- Residential Development
- 3/4 miles of frontage on CR 48

*Trish Leisner, CCIM & Marvin Puryear*



## HIGH ACRES SARASOTA

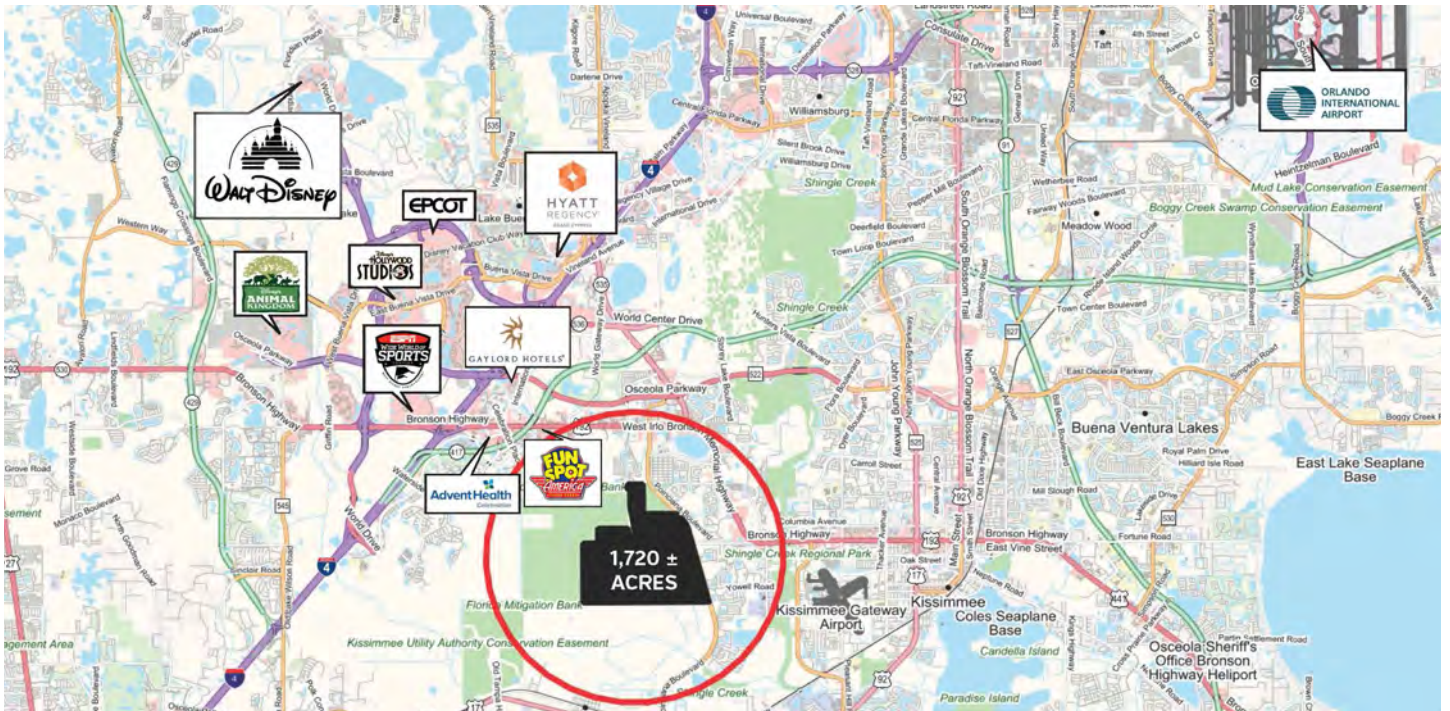
*Sarasota, FL • \$23,000,000 • 773 ± Acres*

- Located 5 minutes southeast of the Concessions Golf Course
- 28 miles from the sandy beaches of Anna Maria Island
- Within the Hamlet Overlay for Sarasota County
- 100% uplands, one of the highest elevations in Sarasota County

*Richard Dempsey, ALC, CIPS & Benjamin Gibson*



# RESIDENTIAL DEVELOPMENT LISTINGS



## POINCIANA BLVD RESIDENTIAL DEVELOPMENT TRACT

Kissimmee, FL • Call for pricing • 1,720 ± Acres

- Premier, large acreage tract features 1.5 ± miles of road frontage along Poinciana Boulevard
- 1,708 acres are zoned Low-Density Residential
- Located 5 miles from the ESPN Wide World of Sports Complex
- 15 minutes to Walt Disney World Resort

Dean Saunders ALC, CCIM & Dusty Calderon



### NEW LISTING

#### NASSAU COUNTY RESIDENTIAL DEVELOPMENT

Bryceville, FL • \$5,874,000 • 660 ± Acres

- Residential development opportunity in a major growth market
- Less than 30 miles from downtown Jacksonville

Bryant Peace, ALC & Jeff Bewsher



PRICE REDUCED

#### SHADY HAMMOCK ESTATES

Morrison, FL • \$8,400,000 • 420 ± Acres

- The property has been utilized as both a peanut farm and a cattle ranch
- 10-acre tract subdivision just 20 minutes from the World Equestrian Center
- Beautiful oak trees and open pastures

Dusty Calderon



UNDER CONTRACT

#### LAKE HATCHINEHA ROAD RESIDENTIAL

Haines City, FL • \$11,000,000 • 335 ± Acres

- Seller understands the timeline associated with development
- Beautiful parcel of Old Florida land
- Extensive road frontage

R. Todd Dantzler, CCIM



#### UNDER CONTRACT

#### FIRETOWER RANCH ROAD LAKEFRONT RESIDENTIAL

Haines City, FL • \$9,000,000 • 265 ± Acres

- Beautiful offering of Old Florida land
- Extensive lake frontage
- TOHO Water Authority jurisdiction
- Ease of access to US 27

R. Todd Dantzler, CCIM



#### EAST EUSTIS DEVELOPMENT ACREAGE

Eustis, FL • \$5,126,000 • 233 ± Acres

- East of Eustis on SR 44
- 100% uplands
- Possible annexation into Mt. Dora
- Close to the SR 429 extension

David Hitchcock ALC, CCIM & Clay Taylor, ALC



#### DUNDEE LAKES RESIDENTIAL DEVELOPMENT

Dundee, FL • \$17,000,000 • 215 ± Acres

- 419 residential lots
- 4,700 feet of shoreline
- East of the town of Dundee
- Beautiful new residential development

David Hitchcock ALC, CCIM & Clay Taylor, ALC



# RESIDENTIAL DEVELOPMENT LISTINGS

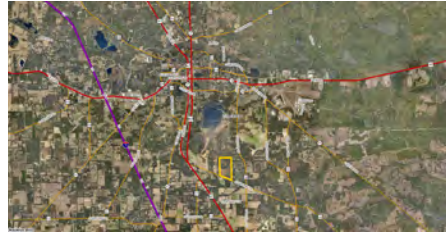


## HIGHWAY 60 LAKEFRONT DEVELOPMENT

Lake Wales, FL • \$4,900,000 • 206 ± Acres

- 1,380 ± FT of Lakefront on Lake Parker
- 4,800 ± FT of Highway 60 frontage
- 1,320 ± FT of frontage on both sides of Old Bartow Road City Water and Sewer

Daniel Lanier



## 189 ACRE SFR DEVELOPMENT PARCEL

Lake City, FL • \$1,250,000 • 188 ± Acres

- Great investment or residential development property
- Located just southeast of Lake City within the Designated Urban Development Area

Tony Wallace, CF & Marvin Puryear



## LECANTO 166 RESIDENTIAL DEVELOPMENT

Lecanto, FL • \$5,000,000 • 166 ± Acres

- Beautiful rolling hills with pasture
- Located on busy South Lecanto Hwy, which is four lane and has a turn lane into the property

Greg Driskell, David Hitchcock & Clay Taylor



## LIVE OAK 145 ACRE DEVELOPMENT PARCEL

Live Oak, FL • \$1,500,000 • 145 ± Acres

- Located in Suwannee County, but annexable into Live Oak
- Can be mixed-use, residential development, multifamily development

Marvin Puryear & Tony Wallace, CF



## HAWTHORNE RESIDENTIAL LOTS

Hawthorne, FL • \$4,900,000 • 128 ± Acres

- 825 platted lots
- Lots are permitted, and shovel-ready
- Buildable lots will all be over .25 acres
- Ten houses under construction

Clay Taylor, ALC & David Hitchcock ALC, CCIM



## AVON PARK RV/MH ACREAGE

Avon Park, FL • \$2,850,000 • 76 ± Acres

- Excellent accessibility to US Highway 27
- Great zoning and future land use
- More than 3,000 FT of lake frontage on Anoka and Lake Lelia

Laura J. Wheeler, Clay Taylor & David Hitchcock

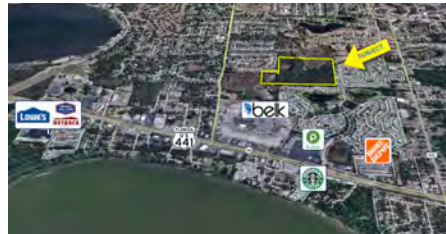


## LAKE SMART RESIDENTIAL DEVELOPMENT LAND

Winter Haven, FL • 56 ± Acres

- Lake frontage
- Development land

Clay Taylor, ALC & David Hitchcock ALC, CCIM



## NORTH LAKE COUNTY RESIDENTIAL LAND

Leesburg, FL • \$3,500,000 • 45 ± Acres

- 45 ± Acres [38 ± acres uplands]
- SFR Development Parcel
- 55 FT Easement Adjoins Lake Square Mall with direct access

Marvin Puryear



## WESLEY CHAPEL RESIDENTIAL DEVELOPMENT

Wesley Chapel, FL • \$1,750,000 • 40 ± Acres

- Residential development, 6DU/1AC
- Allowed up to 192 lots
- Retail and commercial amenities within 2 miles

Clay Taylor, ALC & David Hitchcock ALC, CCIM



## OAK HAMMOCK RESERVE

DeLand, FL • \$6,380,000 • 38 ± Acres

- Residential development that will be fully approved, permitted and shovel ready (estimated January 2023)

Clay Taylor, David Hitchcock & Dean Saunders



## WEST LAKELAND RESIDENTIAL DEVELOPMENT

Lakeland, FL • \$2,500,000 • 31 ± Acres

- Minutes from downtown
- Allows for 4 units per acre
- Public water and sewer available

Clay Taylor, ALC & David Hitchcock ALC, CCIM



## MADELINE COMMONS RESIDENTIAL DEVELOPMENT

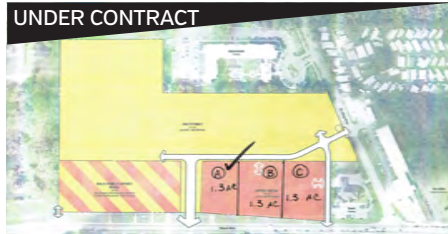
Port Orange, FL • \$8,000,000 • 31 ± Acres

- Adjacent to Sugar Mill Elementary School
- Nearly fully-approved
- Two miles to the Atlantic Ocean
- In a quiet residential area

David Hitchcock ALC, CCIM & Clay Taylor, ALC



# RESIDENTIAL DEVELOPMENT LISTINGS



## 29 ACRES FOR INFILL MIXED USE DEVELOPMENT

29 ± Acres & 4 Acres

- 25 Acres for 350 MF units \$8,900,000
- 4 Acres on corner for commercial development \$1,200,000
- Mixed-use development
- Located just off of US 301

Steve Toner, MBA



## KATHLEEN ROAD 27 ACRES

Lakeland, FL • \$3,375,000 • 27 ± Acres

- 100% uplands
- Land use is R-1
- Public water & sewer are adjacent to the property

Clay Taylor, ALC & David Hitchcock ALC, CCIM

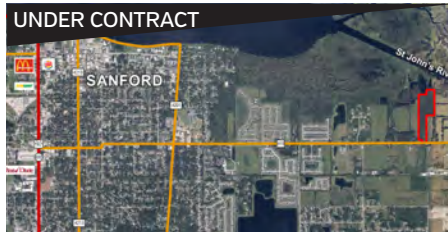


## 24 ACRES LAKE HATCHINEHA ROAD

Haines City, FL • 24 ± Acres

- Sale subject to land use change
- Rectangular in shape to facilitate development
- In the way of future residential

R. Todd Dantzler, CCIM



## SANFORD RESIDENTIAL 88 POSSIBLE LOTS

Sanford, FL • \$2,950,000 • 22.6 ± Acres

- 22.6 Acres [20.4 Acres Uplands] - 88 Lots
- Electric and water available - sewer being brought in
- Close to shopping, dining, and beaches

David Hitchcock ALC, CCIM & Clay Taylor, ALC



## BUCKEY LOOP ROAD MULTI FAMILY

Winter Haven, FL • \$700,000 • 16.13 ± Acres

- Multifamily land
- Located in a nice area in Winter Haven
- Water and sewer
- Utilities adjacent to the property

David Hitchcock ALC, CCIM & Clay Taylor, ALC



## SILVER LAKE RESIDENTIAL

Frostproof, FL • \$1,600,000 • 16 ± Acres

- Currently growing bears lemon trees
- Brand new dock with water and electricity
- Brand new 6" well, 93% efficient, and solar panel powered

Laura J. Wheeler

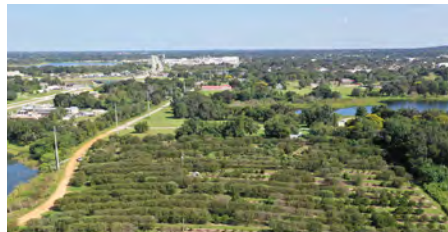


## FRIEDLANDER ROAD DEVELOPMENT

Babson Park, FL • \$300,000 • 9.66 ± Acres

- All uplands
- Paved road frontage
- Less than 1.5 miles to Walmart
- Close to new subdivision developments

David Hitchcock ALC, CCIM & Clay Taylor, ALC



## MIAMI STREET RESIDENTIAL

Lake Wales, FL • \$450,000 • 9.53 ± Acres

- Perfect for a residential development
- Could allow up to 57 lots
- The property has lake frontage on Lake Altamaha

Clay Taylor, ALC & David Hitchcock ALC, CCIM



## HICKORY TREE ROAD 9 ACRES

St. Cloud, FL • \$949,000 • 9.25 ± Acres

- 7.3 acres uplands
- Zoning is Low Density Residential which allows 3-8 residential units per acre
- Public water & sewer are adjacent

Clay Taylor, ALC & David Hitchcock ALC, CCIM



## BRIGHAM ROAD DEVELOPMENT

Winter Haven, FL • \$1,145,000 • 8.80 ± Acres

- 420 FT on US 17
- Zoning-C-3 & R-3
- Allows up to 12 multi-family units/acre

Clay Taylor, ALC & David Hitchcock ALC, CCIM



## FROSTPROOF RESIDENTIAL DEVELOPMENT

Frostproof, FL • \$350,000 • 7.11 ± Acres

- Property is a 7.11-acre citrus grove
- Perfect for a re-development into a small residential subdivision

David Hitchcock ALC, CCIM & Clay Taylor, ALC



## GULF DEVELOPMENT LAND

Port Saint Joe, FL • \$1,300,000 • 5 ± Acres

- Bay frontage
- Mixed Community/Res Zoning
- Walking distance to marinas and restaurants

Bryant Peace, ALC



# FARM & NURSERY LISTINGS

## BUSINESS FOR SALE



### MIAMI-DADE CANNABIS NURSERY

*Miami, FL • \$10,000,000 • 7.22 ± Acres*

- Full-service cannabis cultivation facility
- 43,000 ± SF "Cravo" greenhouse
- Located in the fertile Redlands of Homestead, Florida

*Josh Sheppard & Bo Jahna*

## NEW LISTING



### LITTLE CYPRESS

*Clewiston, FL • Contact the Advisor • 646 ± Acres*

- Turn key Improved Farm with irrigation and reservoirs
- Fully leased for vegetables

*Jeff Cusson, CCIM*



### JACKSON COUNTY IMPROVED AG LAND AND TIMBER

*Marianna, FL • \$4,300,000 • 512 ± Acres*

- Improved Ag land
- Center pivot irrigation
- Timber income potential
- Hunting opportunities

*Jeremiah Thompson & Bryant Peace, ALC*



# FARM & NURSERY LISTINGS



## ALACHUA FARMLIFE

Alachua, FL • \$5,275,000 • 420 ± Acres

- Opportunity to develop small ranches
- Ranchettes can be divided into 5, 10, or 20 acre lots
- Located 2 miles north of Alachua, Florida

Ken Rembert



NEW LISTING

## COX PLACE FARM

Chiefland, FL • \$6,200,000 • 387 ± Acres

- Two center pivots
- Approximately 1.25 miles road frontage
- Within two miles to shopping/restaurants

David Genho



NEW LISTING

## STONEY BATTER FARM

Fanning Springs, FL • \$3,427,000 • 137 ± Acres

- 100% Uplands • currently used as hay fields yet there is the potential to add pivots to farm, fence the property for cattle or horses
- Great opportunity to own a property that could serve as many uses
- Across the street is the River Walk Development which features 220 homes sites

David Genho



## CENTRAL FLORIDA ORGANIC BLUEBERRY FARM

Clermont, FL • \$1,600,000 • 60 ± Acres

- Young producing plants and new varieties
- Secluded location
- Organic acreage with remaining 11 ± conventional acres becoming Organic blueberries in 2023

Carson Futch & Zeb Griffin, ALC



## SOUTH HILLSBOROUGH COUNTY FOLIAGE NURSERY

Ruskin, FL • \$4,500,000 • 47 ± Acres

- Potential Medical Marijuana or Hemp Nursery Operation
- Located in the Heart of the I-75 Corridor
- 3 Phase Power
- 200k ± SF Greenhouses

Carson Futch & Zeb Griffin, ALC



## LAKE COUNTY TREE FARM

Clermont, FL • \$3,000,000 • 40 ± Acres

- Turn key tree farm in Lake County
- Substantial wholesale and retail business
- Located 37 minutes west of Orlando
- Established profitable tree farm

Marvin Puryear & Carson Futch



## VOLUSIA COUNTY LANDSCAPE NURSERY

DeLand, FL • \$1,376,500 • 23 ± Acres

- High and dry acreage
- Large metal building
- Turn key business available

Carson Futch & Zeb Griffin, ALC



## NORTH CENTRAL FLORIDA PROPAGATION NURSERY

Hawthorne, FL • \$2,498,758 • 35 ± Acres

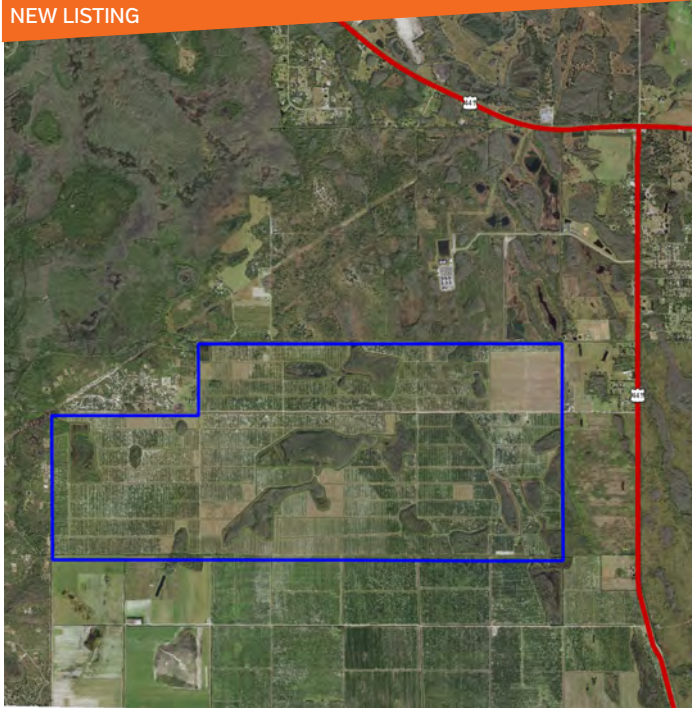
- Turn key, fully operational nursery
- Over 100,000 SF of covered greenhouse space
- Located east of Gainesville
- Produced millions of top-quality rooted clones for over 30 years

Carson Futch & Zeb Griffin, ALC



# CITRUS LISTINGS

NEW LISTING



## HOLOPAW

*Holopaw, FL • Contact the Advisor • 3,063 ± Acres*

- Active and profitable citrus grove
- Fastest growing county in the state
- Potential solar opportunity

*Jeff Cusson, CCIM*

NEW LISTING



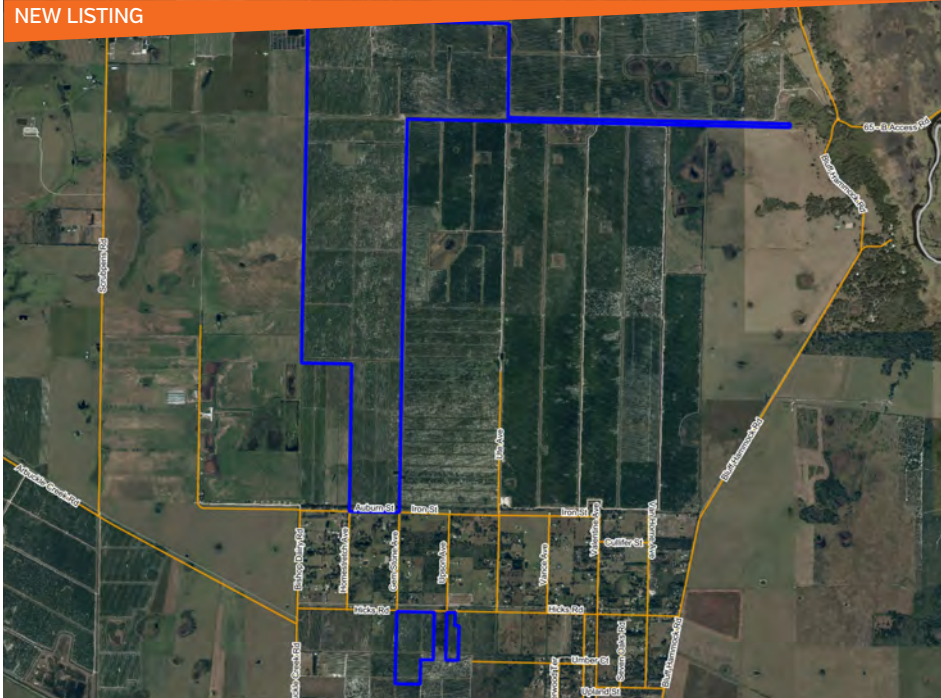
## SUGARBELLE

*Clewiston, FL • Contact the Advisor • 1,877 ± Acres*

- Active citrus grove and farm conversion.
- Warm location south of Lake Okeechobee
- Farm lease pending

*Jeff Cusson, CCIM*

NEW LISTING



## WILBURN

*Sebring, FL • Contact the Advisor • 903 ± Acres*

- Hamlin and Valencia varieties
- Productive, well cared for grove with upside substantial from young trees
- Prime grove location

*Jeff Cusson, CCIM*

UNDER CONTRACT



## HARTT GROVE

*Sebring, FL • \$11,917,500 • 1,136 ± Acres*

- Good quality grove
- Better than average production
- Predominately Valencia oranges
- Eleven large wells

*Richard Dempsey, ALC, CIPS*



## HICORIA ROAD GROVES

*Venus, FL • \$2,630,000 • 286 ± Acres*

- Quality citrus operation
- Nearly 100% tree density
- 30-acres in Hamilins
- 256-acres in Valencias

*Daniel Lanier*



# CITRUS LISTINGS



## MYAKKA RIVER GROVE

Myakka City, FL • \$3,187,500 • 212 ± Acres

- High-density citrus grove
- Two 16" wells
- 1,650 FT ± of hard road frontage
- Excellent Ag property

Daniel Lanier



## LORIDA GROVE

Lorida, FL • \$475,000 • 50 ± Acres

- Lorida Grove is a good-quality 50-acre citrus grove
- 30 acres of Hamlin oranges on several different rootstocks

Richard Dempsey, ALC, CIPS



## FORT DRUM GROVE

Okeechobee, FL • \$995,000 • 42 ± Acres

- Producing Valencia grove
- 10" well with diesel power unit
- Maintained under a strict tree replacement program

Daniel Lanier



## COX ROAD GROVE

Bartow, FL • \$650,670 • 38 ± Acres

- Active 38-acre citrus grove
- Great potential for smaller acreage home sites
- Active and well-maintained orange grove

Richard Dempsey, ALC, CIPS



## SCENIC HIGHWAY GROVE

Lake Wales, FL • \$1,000,000 • 37 ± Acres

- Good Location with development potential
- Active citrus
- Cell tower lease

Richard Dempsey, ALC, CIPS



## TOWER ROAD GROVE AND HOMESITE

Babson Park, FL • \$194,000 • 9.7 ± Acres

- Active citrus grove consisting of 9.7 Acres
- Area of Central Florida in high demand for acreage homesites
- East of the property is the most desirable

Richard Dempsey, ALC, CIPS

**THERE'S NOTHING LIKE...** owning your land and enjoying every minute of it.

**Time is the one commodity you can't get back. Make the most of it.**

Fresh air and sunshine. Fishing and four-wheeling. Family fun and memories that last a lifetime. What does owning your own land mean for you?

Often, we put off decisions until it's too late. What's stopping you from living the life you want today? At Farm Credit, our programs are designed specifically for buyers who want land in the country. Our experts can help you land the loan that's right for you – so you can make the most of it today!



**FARM CREDIT**

FARMCREDITFLORIDA.COM



# GEORGIA LISTINGS

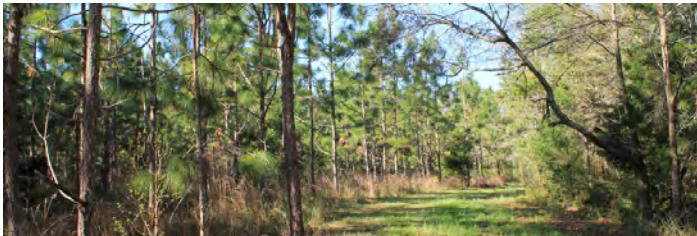


## J W CANNON FARM

Cordele, GA • \$20,000,000 • 1,676 ± Acres

- 1,840 SF cabin, 1,444 SF office, 2 tenant houses, multiple barns, pecan cleaning facility
- 1.7 miles of frontage on Lake Blackshear and 836 acres of pecans
- Hunting, fishing, ATV/UTV riding, and equestrian

Todd Davis, Scott McGregor & John Haynes

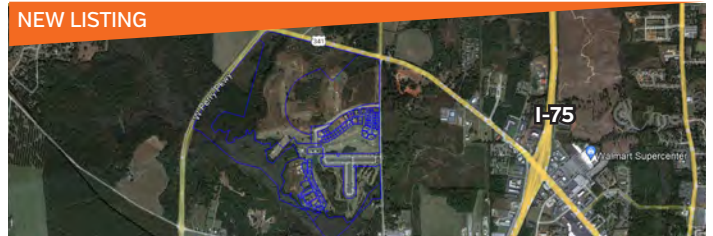


## SW GEORGIA HUNTING & TIMBER TRACT

Arlington, GA • \$649,600 • 203 ± Acres

- 203 ± acres of endless recreation and hunting
- Located on the outskirts of Arlington city limits
- Roughly 90 ± acres of ready-to-be-thinned Long Leaf pines

Austin Fisher



## GEORGIA DEVELOPMENT

Perry, GA • \$14,800,000 • 494 ± Acres

- 80 Finished Lots • 156 Single Family Attached Lots • 180 Condo Units
- 18 hole golf course
- Approvals for: 670 Single Family Detached Lots many of them with golf course frontage
- 21.5 acres Commercial Lands

Jeff Cusson, CCIM & Austin Fisher



## SHADY OAK FARMS

Albany, GA • \$1,349,000 • 136 ± Acres

- 50 ± acres of irrigated pecans, 66 ± acres of mixed hardwood and pine
- Single family home with a guest house
- Excellent hunting
- Located 10 minutes from Albany, Georgia

Todd Davis



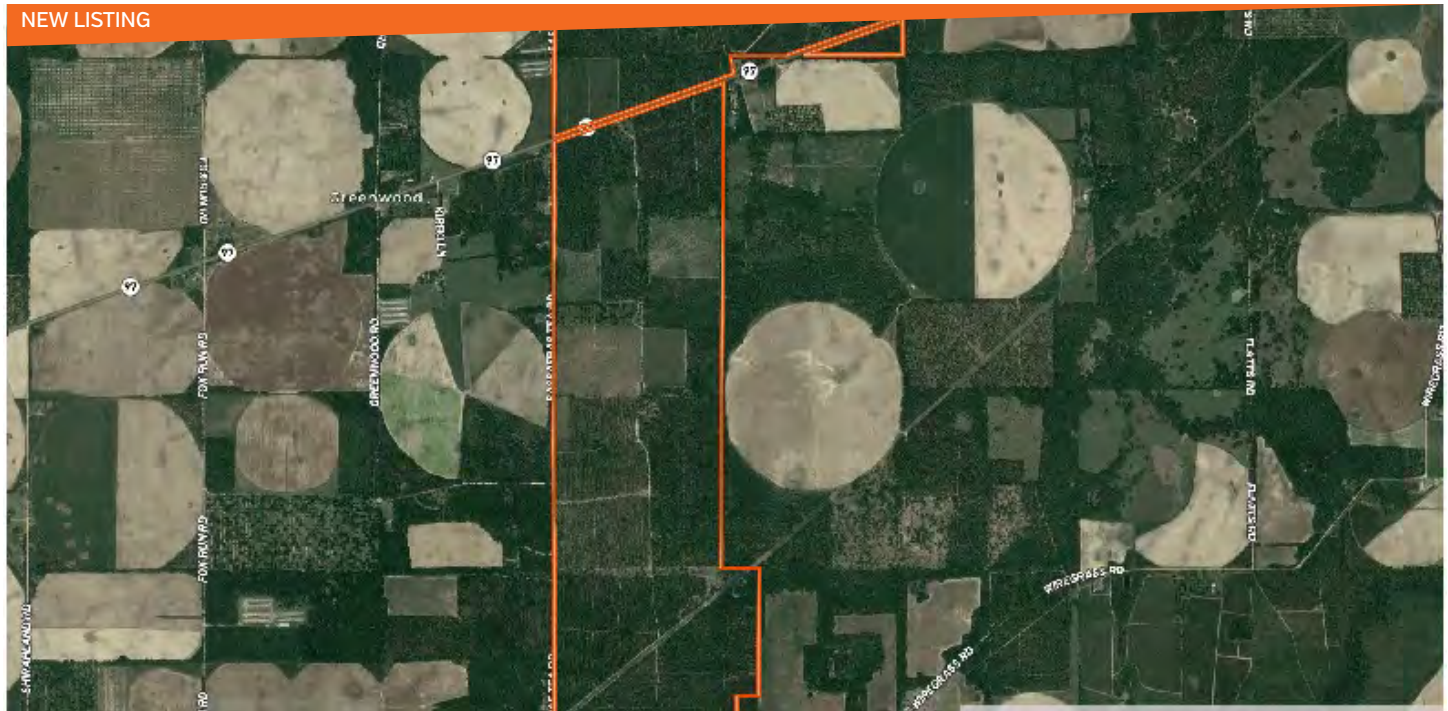
## GOFFS MILL

Cuthbert, GA • \$399,000 • 142 ± Acres

- Waterfrontage along Goffs Mill Creek
- Three springs on property
- Established food plots
- 2,300 ± FT of frontage on Goffs Mill Road

Todd Davis





## FOREST LODGE FARM

Mitchell County, GA • Call for Pricing • 1,523 ± Acres

- Excellent timberland
- Plentiful hunting and recreation
- Improved crop field with center pivot irrigation
- Working forest conservation easement in place

Austin Fisher & Jeremiah Thompson



## GEORGIA RANCH AND ESTATE HOME

Byromville, GA • \$1,550,000 • 50 ± Acres

- Spacious, estate home
- Family compound great for hunting, deer, ducks
- A pond with cattle
- Would make a great horses ranch

Carson Futch



## CENTRAL GEORGIA RANCH 119 ± ACRES

Byromville, GA • \$650,000 • 119 ± Acres

- Established pasture
- Stock pond for duck hunting
- Room for recreational activities

Carson Futch



## HIGHWAY 32 DEVELOPMENT

Leesburg, GA • \$420,000 • 35 ± Acres

- 100% upland
- Half a mile west of Leesburg, Georgia
- 1,500 ± FT of frontage on Hwy 32

Todd Davis




## LAKEFRONT RECREATIONAL ESTATE

Moultrie, GA • \$999,999 • 49 ± Acres

- New construction lodge
- Bass pond
- Furnishings included
- Adjoins Ashburn Hill Plantation

Bryant Peace, ALC





**WE SEE YOU AS  
MEMBERS, NOT  
ACCOUNT NUMBERS.**

Personal & Business Accounts | Mortgages & Loans  
Open Saturdays | Face-To-Face Banking  
7-7 Drive-Thru Hours

Open an account online at [midflorida.com](https://midflorida.com) or visit any branch.

**YOUR LIFE.  
YOUR MONEY.  
YOUR CREDIT UNION.**

**MIDFLORIDA**  
*Florida's community credit union®*

Insured by NCUA.



NMLS# 417627



# EXPERT ADVISORS

Our advisors have a history of management and experience brokering Development, Retail, Industrial, Multifamily, and Office properties. Their many years of experience provide value to both the buyer and client when selling or purchasing a property.

ADVISOR	MOBILE	EMAIL
Dean Saunders, ALC, CCIM	863-287-8340	dean@svn.com
Gary Ralston, CCIM, SIOR, CPM, CRE	863-738-2246	gary.ralston@svn.com
R. Todd Dantzler, CCIM, CCIM	863-287-3586	todd.dantzler@svn.com
Eric Ammon, CCIM	863-602-1001	eric.ammon@svn.com
Jim Allen	863-738-3636	jimmy@sreland.com
Brian Beasley, CCA, CNLM	863-287-2702	brian.beasley@svn.com
Jeff Bewsher	352-317-0586	jeff.bewsher@svn.com
Dusty Calderon	407-908-9525	dustyc@svn.com
Jeff Cusson, CCIM	772-473-8497	jeffcusson@svn.com
Todd Davis	229-349-3884	todd.davis@svn.com
Tyler Davis	863-877-2829	tyler.davis@svn.com
Richard Dempsey, ALC, CIPS	863-581-1903	r.dempsey@svn.com
Greg Driskell	386-867-2736	greg.driskell@svn.com
Jim Edwards, AICP	863-430-4244	james.edwards@svn.com
Austin Fisher	850-545-9132	austin.fisher@svn.com
Carson Futch	863-559-0800	carson.futch@svn.com
David Genho	407-952-9487	dgenho@svn.com
Zeb Griffin, ALC	352-630-7547	zeb.griffin@svn.com
Ben Gibson	941-737-2800	ben.gibson@svn.com
David Goodlett	561-723-9210	david.goodlett@svn.com
David Hitchcock, ALC, CCIM	863-557-0082	david.hitchcock@svn.com
Tim Holden	561-758-7656	tholden@sreland.com
John Holzaepfel, ACF, CF, CA	352-238-0917	johnh@nrpsforesters.com
Eric Hoyer, CF, CA, RCA	863-670-0734	eric.hoyer@svn.com
Bo Jahna	863-557-0320	bojahna@svn.com
Chad Johnson	352-535-5320	chad.johnson@svn.com
Christina Kurtz-Clark, CCIM, ALC	352-223-0817	christina.kurtzclark@svn.com
Daniel Lanier	863-698-2971	daniel.lanier@svn.com
Trish Leisner, CCIM	352-267-6216	trish.leisner@svn.com
Paul Meador	863-692-3425	pmeador@saundersrealestate.com
Craig Morby	863-581-0059	craig.morby@svn.com
Bryant Peace, ALC	229-726-9088	bryant.peace@svn.com
Marvin Puryear	352-267-5900	mpuryear@svn.com
Ken Rembert	352-316-0101	ken.rembert@svn.com
Rick Rupp, ALC	863-221-6497	rick.rupp@svn.com
Trent Saunders	863-640-0390	trent.saunders@svn.com
Chris Settineri	973-407-0008	csettineri@svn.com
Josh Sheppard	407-399-1120	josh.sheppard@svn.com
Matthew Simpson	352-317-8932	matthew.simpson@svn.com
Clay Taylor, ALC	863-224-0835	clay.taylor@svn.com
Jeremiah Thompson	352-255-3670	jeremiah.thompson@svn.com
Steve Toner, MBA	813-391-0302	steve.toner@svn.com
Tom Tuggle	478-297-5471	tom.tuggle@svn.com
Jack Vogel	352-238-0858	jvogel@sreland.com
Keat Waldron, ALC	863-225-1231	keat.waldron@svn.com
Tony Wallace, CF	352-538-7356	tony.wallace@svn.com
Laura Jo Wheeler	863-594-0170	ljwheeler@svn.com



# WHAT IS YOUR PROPERTY WORTH?

**CALL US FOR A FREE PROPERTY VALUATION 877-518-5263**



## **HEADQUARTERS**

1723 Bartow Rd  
Lakeland, Florida 33801  
863.648.1528

## **ORLANDO**

605 E Robinson Street, Suite 410  
Orlando, Florida 32801  
407.516.4300

## **NORTH FLORIDA**

356 NW Lake City Ave  
Lake City, Florida 32055  
386.438.5896

## **GEORGIA**

125 N Broad Street, Suite 210  
Thomasville, Georgia 31792  
229.299.8600

