

OKEECHOBEE RANCH & DEVELOPMENT

OKEECHOBEE, FL | ST. LUCIE COUNTY

99 ± ACRES TOTAL



This is a great parcel of ag land and pasture for cattle that will give you an excellent investment for future development. With rail adjacent to the property and a future land use of industrial, you have desirable opportunities in the next decade to pursue industrial development, while gaining your agricultural tax advantages now.

Acreage: 99 ± acres

Improved Acreage: 99 ± acres

Price: \$10,000 per acre
\$991,100 total

Location:

- SR 710 & SE 59th Blvd. Okeechobee, FL
Okeechobee County
- 2 ± miles from intersection of SR 70 and SR
710

Road Frontage:

- 1,664 ± ft on SR 710
- 1,220 ± ft on SE 59th Blvd.

Rail Frontage: Runs along the southwest boundary and adjacent to property boundary line

Future Land Use: Industrial Overlay

Soil Type: Predominately Immokalee Fine Sand

Grass Type: Bahia

Land Cover: Grass, Pine, Palmetto

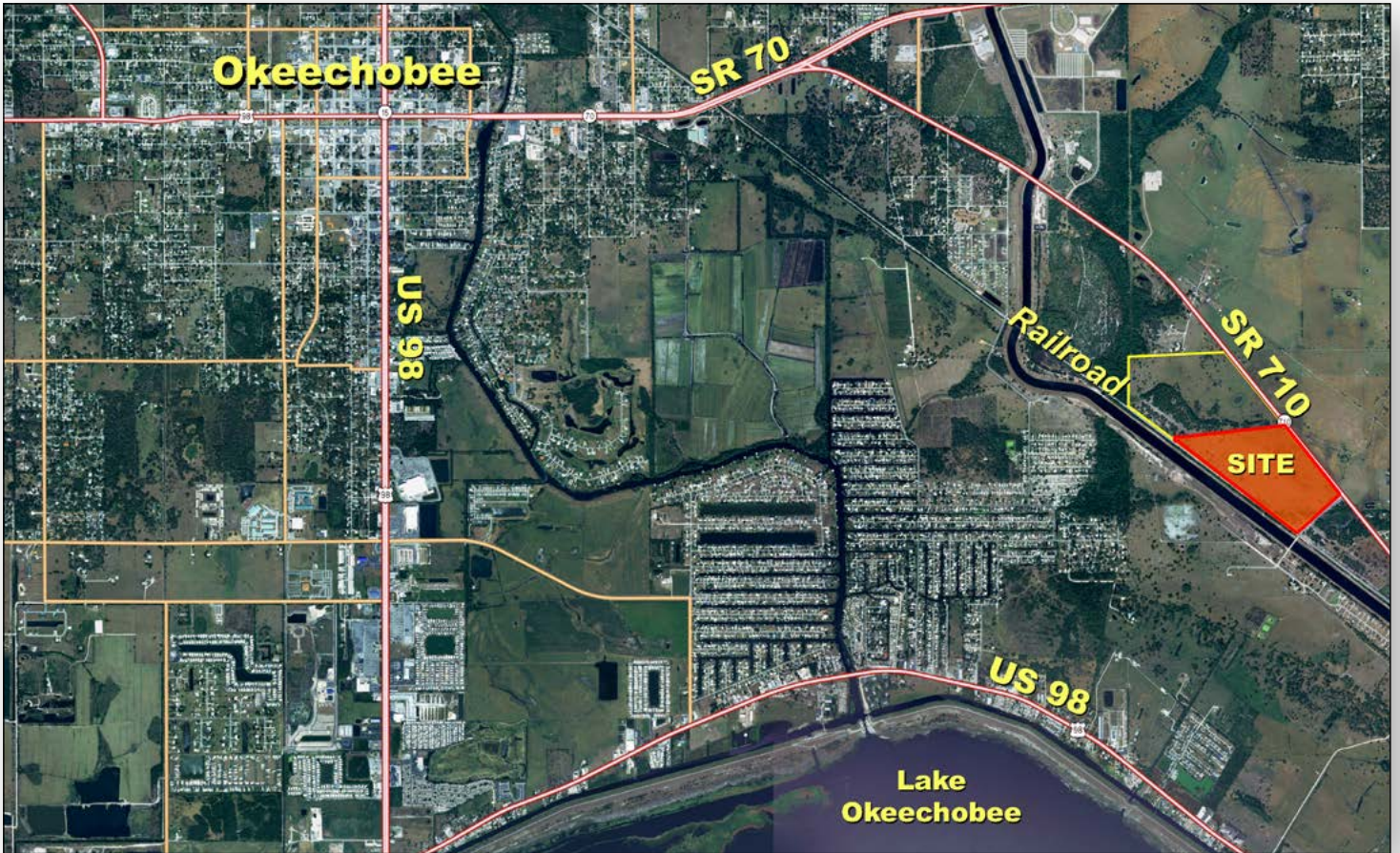
Fencing: Perimeter

Water on Site: Man-made cattle water pit

Utilities: Power by Florida Power & Light with a 100 foot right-of-way for FPL



***Excellent Investment
For Future
Industrial Development!
Adjacent to Rail
Frontage on SR 710***



Parcel ID: 1-30-37-36-0A00-00001-0000

Address: Highway 710 and SE 59th Blvd,
Okeechobee, FL 34974

STR: 30-37-36

Driving Directions:

- From SR 70 & SR 710 east of Okeechobee, go southeast on SR 710 approximately 1.75 miles
- Property is on south side of SR 710

Close to
City of Okeechobee
and Lake Okeechobee
US 98, SR 710, SR 70

**99 ± Acres • Ag, Pasture, Future Industrial Development
Adjacent to Rail, on SR 710**

SREland.com/OkeechobeeSR710

Brian Beasley, CCA, CNLM, 863.774.3527 | Brian@SREland.com



LAKELAND OFFICE:
114 N. Tennessee Ave. 3rd Floor
Lakeland, FL 33801
863.648.1528 - Main Office

LAKE CITY OFFICE:
356 NW Lake City Avenue
Lake City, FL 32055
386.438.5896

©2019 SVN | Saunders Real Estate. All SVN® Offices Independently Owned and Operated
Saunders Real Estate is regarded as an authority on all types of Florida land and conservation
easements, transacting over \$2.5 billion in sales since 1996. Offering land, forestry, and conservation
easement real estate services through Saunders Real Estate and the Saunders Real Estate Forestry
Group, the Saunders team of land professionals offers advisory and transactional services through
their home office in Lakeland, FL, the North Florida office in Lake City, FL, and the South Georgia office
in Thomasville, GA. We provide services to land and commercial clients through both SRE and our
commercial real estate brokerage, Saunders Ralston Dantzler Realty.

