

Colding Loop

Wimauma, Florida

19.1 +/- Acres

Pasture, Homesite, Farming



Land • Commercial • Conservation • Land Management
114 North Tennessee Ave., 3rd Floor, Lakeland, FL 33801

Phone: 863-648-1528 · 877-518 LAND

Richard Dempsey 863-581-1903

saundersrealestate.com



SAUNDERS
REAL ESTATE

Colding Loop

This property is fenced and cross-fenced, currently a pasture tract for cattle. There is an estimated 3 acres of wooded area near the middle of the tract that borders a drain/wet weather creek which bisects the property.

Location:

15709 Colding Loop, Wimauma, FL
33598; Hillsborough

Acres:

19.1+/- acres

Improved:

16 +/- acres

Price:

\$159,000

Land Use:

AR

Grass Types:

Bahia

Road Frontage:

520 +/- ft on Colding Loop

Utilities:

TECO

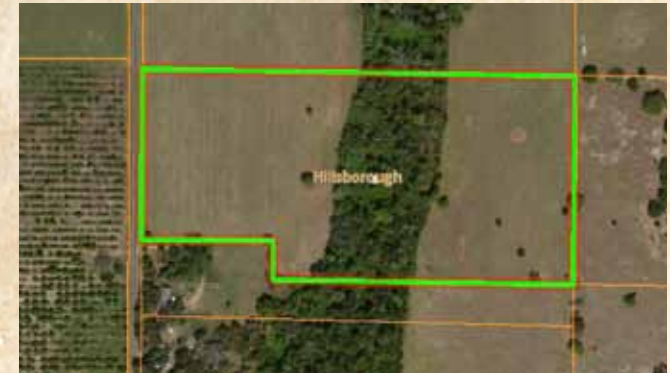
Nearest Intersection:

Colding Loop and Sweat Loop

GPS: Lon: 82.25278 Lat: 27.73722

**Directions:**

- From Wimauma go east on CR 674 to Balm Wimauma Road
- Turn north and go to Sweat Loop Road and turn east heading to Colding Loop
 - Turn south on Colding Loop
 - Property is on the left 1/2 mile



Coldwell Banker Commercial Saunders Real Estate • 877-518 LAND • saundersrealestate.com

Coldwell Banker Commercial and the Coldwell Banker Commercial Logo are registered service marks licensed to Coldwell Banker Commercial Affiliates. Each Office is Independently Owned and Operated. Every attempt is made accurate information on this property as possible, however, COLDWELL BANKER COMMERCIAL SAUNDERS REAL ESTATE (CBCSRE) does not guarantee the accuracy. Buyer should rely entirely on their own research, inspection of property, and records. ©2011 Coldwell Banker Commercial Saunders Real Estate, All Rights Reserved, Worldwide: All content is the property of CBCSRE. You may not copy or use this material by any means, in any form without written consent from CBCSRE.