



**LEVY COUNTY  
HUNTING & TIMBER**

Bronson, FL • Levy County

**797 +/- ACRES TOTAL**

***Fantastic Hunting! Timber***



**Parcel ID Numbers:**

0249-200-200, 0249-100-200, 0249-200-100  
0248-900-100, 0250-700-400, 0250-600-100  
0249-100-100, 0249-000-200

**GPS:** 29.411292, -82.683083

**Driving Directions:**

- From I-75, exit onto SR 24 E
- Travel 24 miles to parcel

**Showing Instructions:**

By appointment only. Gate is locked and hunting lease is in place.

***Abundant Game Population  
Of Deer, Turkey and Hogs  
for a Fantastic Hunting  
Experience!***

***Within Minutes of Gainesville and I-75  
4 Entrances • 1 Mile Road Frontage on SR 24  
40 Miles to Ocala***



# LEVY COUNTY HUNTING & TIMBER

Bronson, FL • Levy County

A beautiful piece of timberland, this property has an abundant game population of deer, turkey and hogs for a fantastic hunting experience. The property has over five miles of well-maintained internal roads.

**Total Acreage:** 797.55 +/- acres

**Sale Price:** \$1,814,500

**Price per Acre:** \$2,275

**Site Address:** SR 24, Bronson, FL 32621, Levy County

**Road Frontage:** 1 +/- mile on SR 24

**Entrances:**

- Locked gate access on SR 24
- 3 gates are located on Doc Smith Road

**Soils:** Predominately Smyrna and Pomona fine sands, Placid and Samusula soils

**Land Cover:** Timber, slash pine, oaks

**Fencing:** Portion along Doc Smith Road has high fence, mainly 3-strand barbed wire

**Zoning/FLU:** Timber

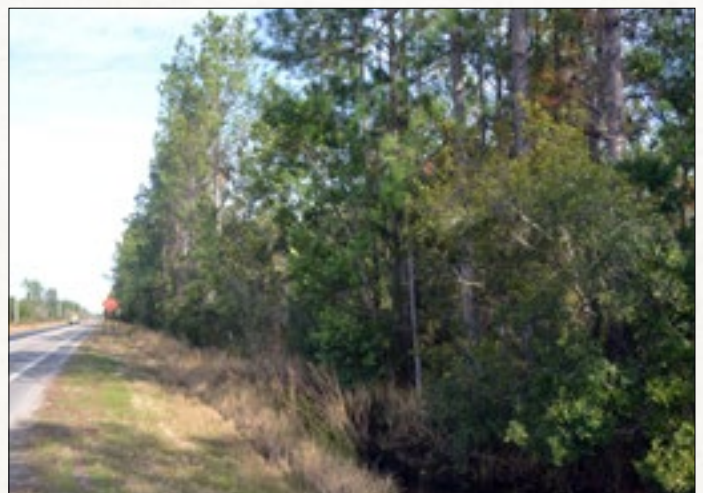
**Income Features:** Timber

**Current Use:** Timber and hunting

**Uses:** Fantastic hunting, outdoor recreation, timber

**Game Populations:** Deer, turkey, hogs, ducks

**Taxes:** \$1,916 approximately



For additional details and maps, go to:

**[www.SaundersRealEstate.com/LevyHuntingTimber](http://www.SaundersRealEstate.com/LevyHuntingTimber)**



**SAUNDERS**  
REAL ESTATE

— FORESTRY GROUP —

**863.648.1528**

114 N. Tennessee Ave.  
3rd Floor  
Lakeland, FL 33801

**797 +/- Acres, Timber & Fantastic Hunting!**  
*5 Miles Internal Road System • Minutes to Gainesville*

## LEVY COUNTY HUNTING & TIMBER

Bronson, FL • Levy County

**797 +/- ACRES TOTAL**

**Debbie Banks**

904.637.4842 • [DBanks@SaundersRealEstate.com](mailto:DBanks@SaundersRealEstate.com)

**Tony Wallace, CF**

352.505.9274 • [TWallace@SaundersRealEstate.com](mailto:TWallace@SaundersRealEstate.com)

*For additional details and maps, go to:*  
***[www.SaundersRealEstate.com/LevyHuntingTimber](http://www.SaundersRealEstate.com/LevyHuntingTimber)***