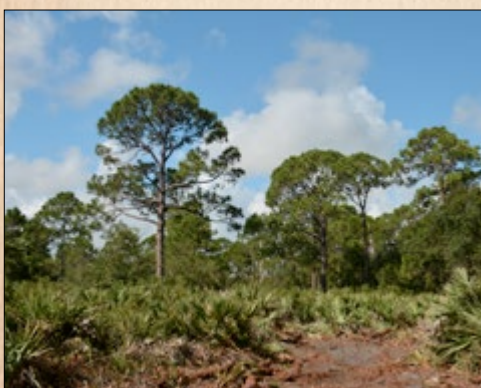
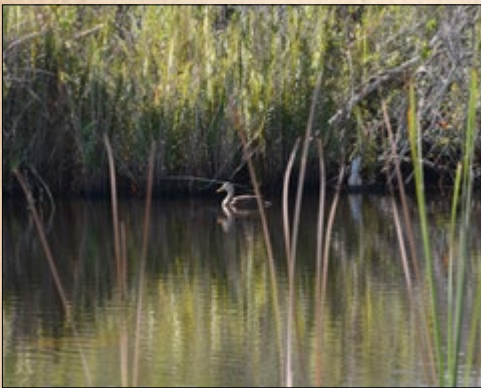


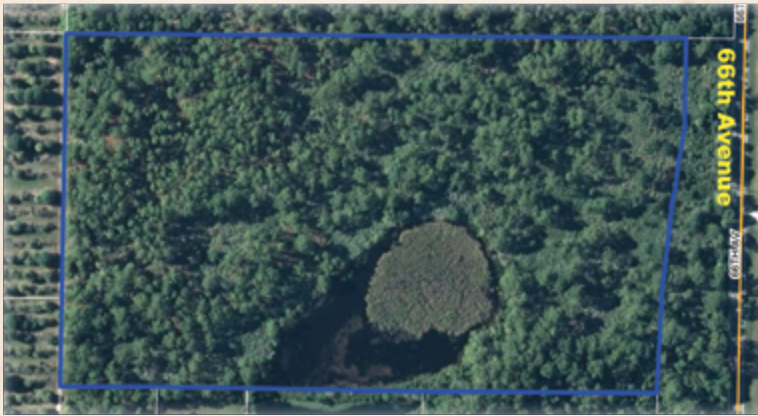
**Vero Beach  
66th Ave.  
17 Acres**

Vero Beach, FL  
Indian River County



# Vero Beach 66th Ave. • 17 Acres

Vero Beach, FL • Indian River County



This property is one of the few naturally wooded acreage sites in the area and has a newly constructed driving trail that opens up the property's natural beauty. A pretty 3-acre pond on the property provides an ideal homesite with water views.

The A-1 zoning allows the property to be split into three parcels for future homesites. The recently improved 66th Avenue provides easy access to the mall and surrounding amenities or to travel to the north for easy access to the barrier island. A number of public and private golf courses are also within two to three miles of the property including: Sandridge, Red Stick, Johns Island West and Quail Valley Golf Clubs.



**Acreage:** 17.7 +/- acres

**Sale Price:** \$320,000

**Price per Acre:** \$18,079

**County:** Indian River

**Site Address:** 7425 66th Avenue, Vero Beach, FL 32967

**Road Frontage:** 670 +/- FT on 66th Avenue

**Water Features:** Shares a pretty 3-acre pond

**Soil Types:** 13 acres Wabasso Fine Sand, 2 acres Pineda Fine Sand, 2 acres Floridana Mucky Fine Sand, Depressional

**Land Cover:** Pine and Palmetto with Oak trees

**Uplands/Wetlands:**

- 2.6 +/- acres wetlands
- Remainder uplands

**Zoning/FLU:** A-1 allowing one unit per 5 acres

**Current Use:** Fallow woods

**Taxes:** \$3065.92 (2015)

**Parcel ID:** 32390600001008000001.0

**GPS:** 27.729313, -80.465739

**Driving Directions:**

- From I-95 or Florida's Turnpike, take exit at SR 60 and travel east to 66th Avenue
- Turn left on 66th Avenue and travel 6 miles
- Property will be on your left



1, 3, 5 Mile Distance Rings

## One of the Few Naturally Wooded Acreage Sites East of I-95!

### Beautiful 3-acre Pond Provides an Ideal Homesite with Water Views

8 +/- Miles to I-95

10 +/- Miles to Vero Beach

## SREland.com/VeroBeach66



**LAKELAND OFFICE**  
114 N. Tennessee Ave., 3rd Fl  
Lakeland, FL 33801  
863.648.1528 - Main Office

**HIGH SPRINGS OFFICE**  
P.O. Box 809 (32655)  
18622 NW US 441  
High Springs, FL 32643

**Jeff Cusson, CCIM**  
772.332.9070 • Jeff@SREland.com

[www.SREland.com](http://www.SREland.com)

©2017 Coldwell Banker Commercial Saunders Real Estate, All rights Reserved, Worldwide. Every attempt is made to provide accurate information on this property, however, COLDWELL BANKER COMMERCIAL SAUNDERS REAL ESTATE (CBCSRE) does not guarantee the accuracy. Buyer should rely entirely on their own research, inspection of property, and records.

©2017 Coldwell Banker Real Estate LLC, dba Coldwell Banker Commercial Affiliates. All Rights Reserved. Coldwell Banker Real Estate LLC, dba Coldwell Banker Commercial Affiliates fully supports the principles of the Equal Opportunity Act. Each Office is Independently Owned and Operated. Coldwell Banker Commercial and the Coldwell Banker Commercial Logo are registered service marks owned by Coldwell Banker Real Estate LLC, dba Coldwell Banker Commercial Affiliates.

022017-A