



LAZY W RANCH

FELDA, FL | HENDRY COUNTY

525 ± ACRES TOTAL

SREland.com/LazyWRanch

Paul J. Meador, Associate Broker 863.692.3425 and
Sara E. Catlett, Associate Broker 863.248.5053



SPECIFICATIONS & FEATURES

Acreage: 525 ± acres

Sale Price: \$2,887,500

Price per Acre: \$5,500

Site Address: 333 N Willis Ranch Road, Felda, FL 33930

Road Frontage: N Willis Ranch Road

Soil Types: Gentry, Gator, Holopaw, Rivera, Chobee, Tuscawillia, Oldsmar, Winder, Wabasso, Malabar

Uplands/Wetlands: Uplands 384 Acres/ Wetlands 141 Acres

Grass Types: Bahia, Bermuda, Blue Stem, Arrowfeather, Pineland Threeawn, Muhl, Carpetgrass, Saltmarsh, Madencane, Scribner

Irrigation/Wells: Cattle Wells

Zoning/FLU: A-2

Fencing: Barbwire

Water Source: Well, Septic

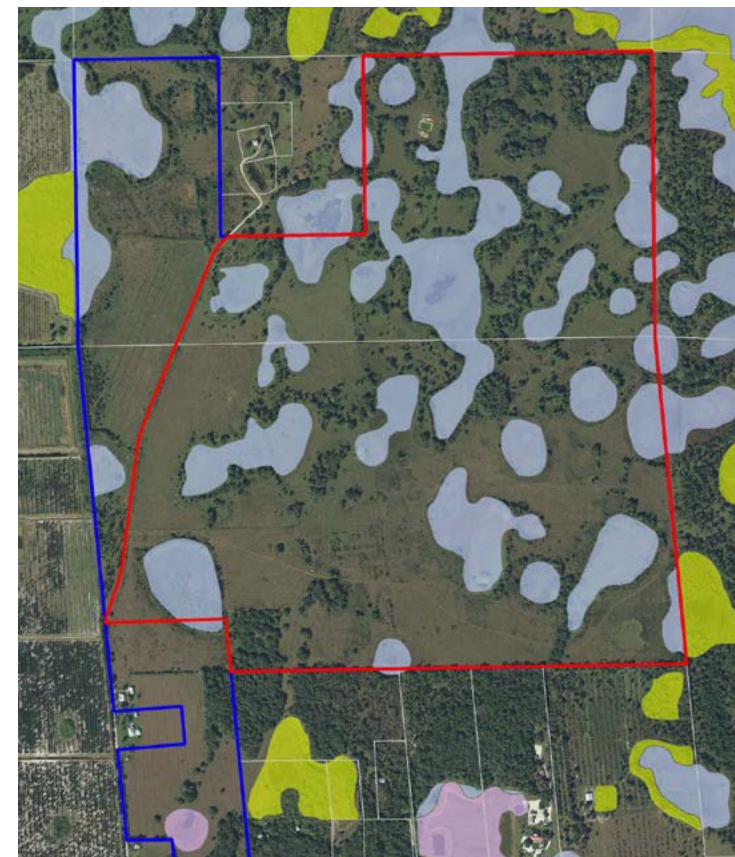
Land Cover: Improved pastures, woodland pastures, mixed shrubs, hardwoods, freshwater marshes

Potential Uses: Ranch, hunting, recreation

Game Populations: Whitetail deer, Osceola turkey, Wild hog

Points of Interest: The Felda community is peaceful and quiet

Lazy W Retreat is a beautiful property with woodland pastures, mixed shrubs and freshwater marshes good for cattle operation, recreation, or hunting operation. This 525 acre property features multiple soil and grass types suitable for Whitetail deer, Osceola turkey, and Wild hog to graze. In addition to hunting, the Felda community is peaceful and quiet allowing for an ideal weekend retreat.



LOCATION & DRIVING DIRECTIONS

Parcel IDs: 1-29-45-22-A00-0001.0000, 1-29-45-15-A00-0002.0000

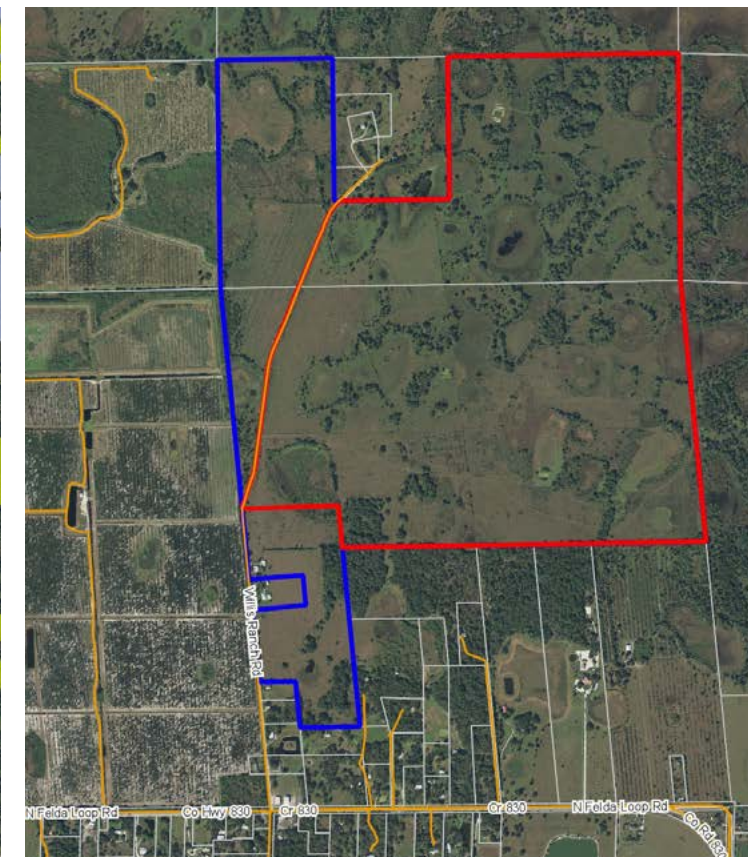
GPS Location: 26.555201, -81.411878

Driving Directions:

- From LaBelle take State Road 29 South for 14.02 miles
- Turn left onto County Road 830 for 1.08 miles
- Turn left onto N Willis Ranch Road for just under 1 mile. There is a cattle guard with a private access gate.

Showing Instructions: Listing agents must accompany. Call: Paul J. Meador 239-860-4600 or Sara E. Catlett 239-872-6863.

Excellent Property for a Hunting Operation





Saunders

REAL ESTATE

863.648.1528
114 N. Tennessee Ave.
3rd Floor
Lakeland, FL 33801

525 ± Acres • Ranch Property
Cattle, hunting or recreation potential!

SREland.com/LazyWRanch

Paul J. Meador, Associate Broker 863.692.3425 | PMeador@SREland.com

Sara E. Catlett, Associate Broker 863.248.5053 | SCatlett@SREland.com



LAKELAND OFFICE:
114 N. Tennessee Ave. 3rd Floor
Lakeland, FL 33801
863.648.1528 - Main Office

HIGH SPRINGS OFFICE:
P.O. Box 809 (32655)
18622 NW US 441
High Springs, FL 32643

©2018 Coldwell Banker Commercial Saunders Real Estate. All rights Reserved, Worldwide. Every attempt is made to provide accurate information on this property, however, COLDWELL BANKER COMMERCIAL SAUNDERS REAL ESTATE (CBCSRE) does not guarantee the accuracy. Buyer should rely entirely on their own research, inspection of property, and records.
©2018 Coldwell Banker Real Estate LLC, dba Coldwell Banker Commercial Affiliates. All Rights Reserved. Coldwell Banker Real Estate LLC, dba Coldwell Banker Commercial Affiliates fully supports the principles of the Equal Opportunity Act. Each Office is Independently Owned and Operated. Coldwell Banker Commercial and the Coldwell Banker Commercial Logo are registered service marks owned by Coldwell Banker Real Estate LLC, dba Coldwell Banker Commercial Affiliates.



052918-A