

DAVIDSON ROAD HUNTING

OTTER CREEK, FL | LEVY COUNTY

39 ± ACRES TOTAL





SPECIFICATIONS & FEATURES

Acreage: 39 ± acres

Sale Price: \$98,350

Price per Acre: \$2,522

Site Address: SW Davidson Rd., Otter Creek, FL 32625

County: Levy

Roads: Improved private limerock grade provides access point to property

Species: 2012 loblolly pine plantation, natural hardwoods

Predominant Soil Types: Boca-Holopaw Complex and Eau Gallie-Holopaw Complex, both with limestone substratum, make up the majority of the tract

Uplands/Wetlands: Approximately 90% uplands

Land Cover: Planted & natural timber

Game Populations: Deer, turkey, and hogs

Potential Recreational Uses: Hunting, ATV riding, horse riding

Income Features: Future timber income

Points of Interest: 30 minutes to Cedar Key and Chiefland. 1 hour to Gainesville via SR 24 and US 19.

Davidson Road Hunting is 39 ± acres of available land perfect for a hunting camp. Deer, turkey and hogs roam abundantly in the area and offer exciting hunting opportunities. This private location is in Otter Creek, Florida only 30 minutes to Cedar Key and 1 hour to Gainesville via SR 24 and US 19. This property is a good investment to create a recreational spot to enjoy with family and friends.



LOCATION & DRIVING DIRECTIONS

Parcel IDs: 0204200100

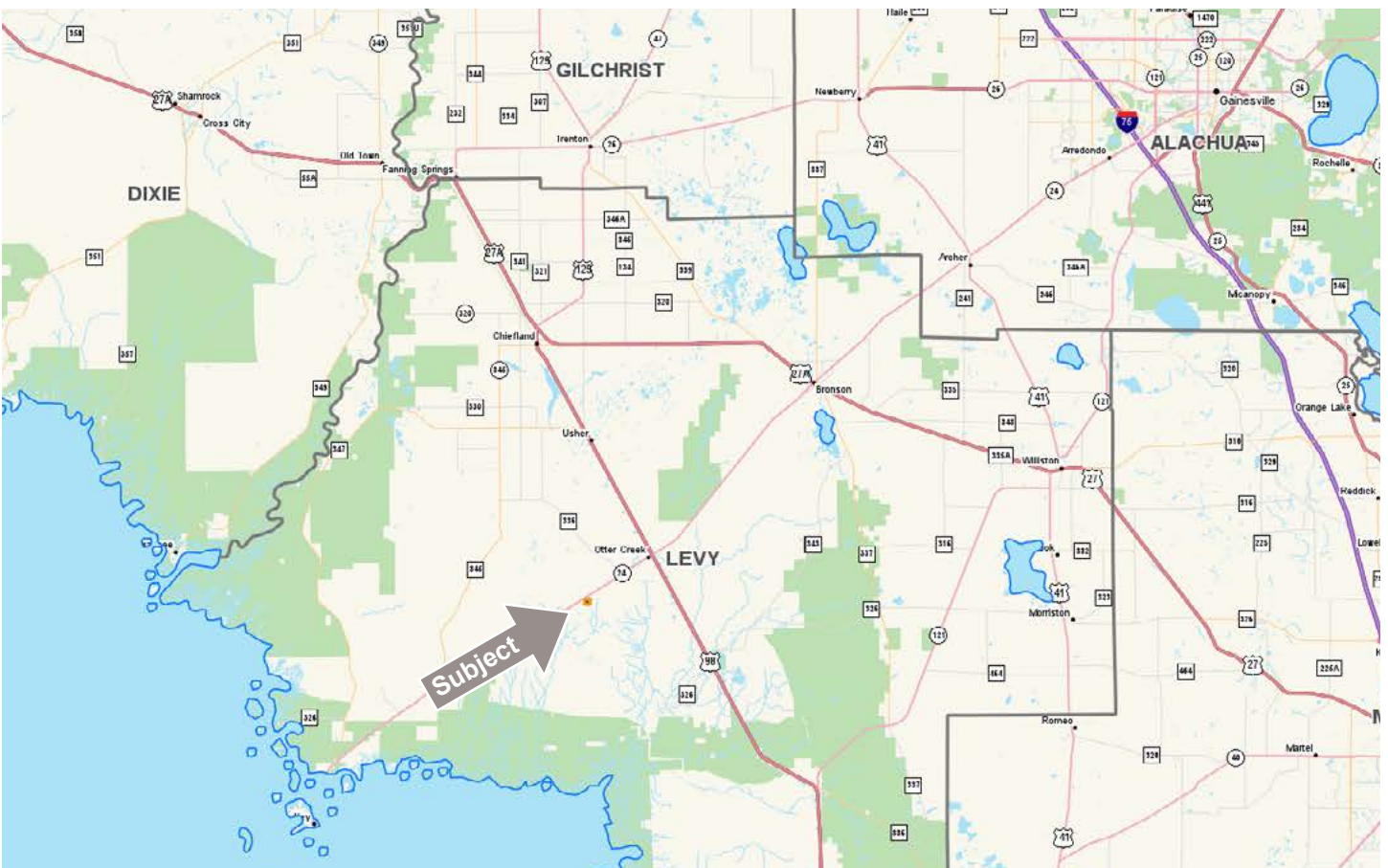
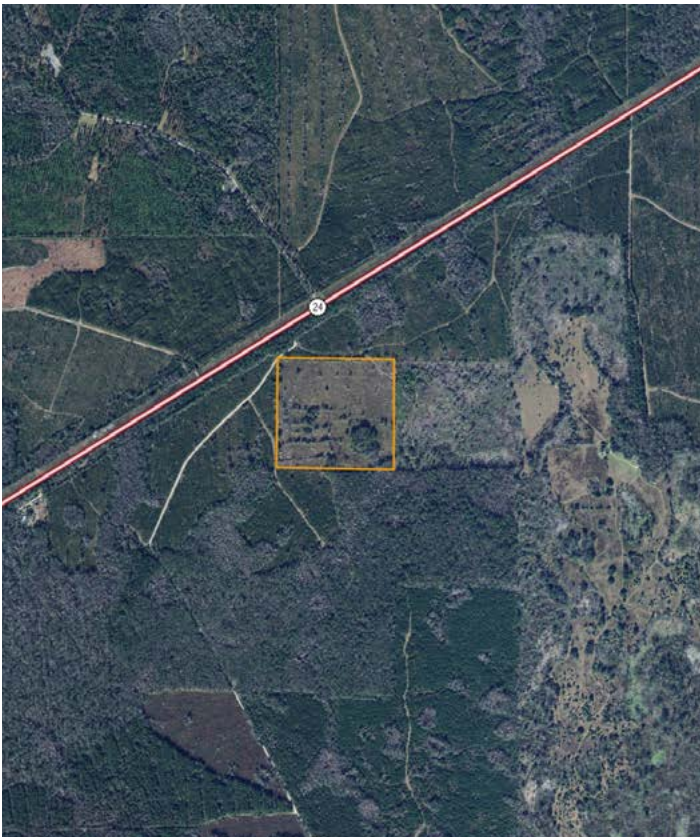
GPS Location: 29.2947, -82.8198

Driving Direction From US 19/98 and SR 24 Intersection:

- Go west on SR 24 for 3.8 miles to Davidson Rd. (a.k.a. Government Tram) turn left (south)
- NW corner of tract is approximately 450 feet down Davidson Rd from SR 24

Showing Instructions: Call listing agents for access

30 Minutes to Cedar Key





Saunders

REAL ESTATE

863.648.1528
114 N. Tennessee Ave.
3rd Floor
Lakeland, FL 33801

39 ± Acres • Private Hunting Area & Timber Income
30 Minutes to Cedar Key and 1 Hour to Gainesville

SREland.com/DavidsonRoad

Greg Driskell, 386.385.7304 | GDriskell@SREland.com
Debbie Banks, 904.637.4842 | Dbanks@SREland.com



LAKELAND OFFICE:
114 N. Tennessee Ave. 3rd Floor
Lakeland, FL 33801
863.648.1528 - Main Office

HIGH SPRINGS OFFICE:
P.O. Box 809 (32655)
18622 NW US 441
High Springs, FL 32643

©2018 Coldwell Banker Commercial Saunders Real Estate. All rights Reserved, Worldwide. Every attempt is made to provide accurate information on this property, however, COLDWELL BANKER COMMERCIAL SAUNDERS REAL ESTATE (CBCSRE) does not guarantee the accuracy. Buyer should rely entirely on their own research, inspection of property, and records.
©2018 Coldwell Banker Real Estate LLC, dba Coldwell Banker Commercial Affiliates. All Rights Reserved. Coldwell Banker Real Estate LLC, dba Coldwell Banker Commercial Affiliates fully supports the principles of the Equal Opportunity Act. Each Office is Independently Owned and Operated. Coldwell Banker Commercial and the Coldwell Banker Commercial Logo are registered service marks owned by Coldwell Banker Real Estate LLC, dba Coldwell Banker Commercial Affiliates.



091118-A