

NORTH LAKE COUNTY RESIDENTIAL DEVELOPMENT

UMATILLA, FL | LAKE COUNTY

18.3 ± ACRES TOTAL





SPECIFICATIONS & FEATURES

Acreage: 18.29 ± acres

Sale Price: \$349,000

Price per Acre: \$19,071

Site Address: 18316 Keene Rd., Umatilla, FL
32784

County: Lake

Previously Approved: 40 ± layout plan available

Average Lot Size: Various

Zoning/FLU: Low Density Residential PUD

Road Frontage: 1,100 ± ft on Keene Rd

Water Frontage: 300 ± ft on Lake Joseph

Uplands/Wetlands: 17.54 ± acres uplands, 0.75 ±
acres wetlands, 96% total uplands

Nearest Intersection: Property is located at the
corner of FL 19 and Keene Rd

Utilities & Water: City of Umatilla H2O along FL 19 N

Points of Interest: Central Location and just
minutes to the Ocala National Forest, 18 miles to
The Villages, 30 miles to Downtown Orlando, 35
miles to Disney, 40 miles to Daytona.

Taxes: \$1,729 (2018)



North Lake County Residential Development is 18.29 ± acres with 40 ± previously approved lots. With lakefront views, this property has several neighboring communities. Located in Umatilla, this property is located at the corner of FL 19 and Keene Rd. Only a short drive to the Ocala National Forest, 18 miles to The Villages, 35 miles to Disney and 40 miles to Daytona this location is in a rapidly developing area. To learn more contact the listing agents and schedule a viewing time.

LOCATION & DRIVING DIRECTIONS

Parcel IDs: 06182701050000030,
061827010500000100

GPS Location: 28.959463,-81.654089

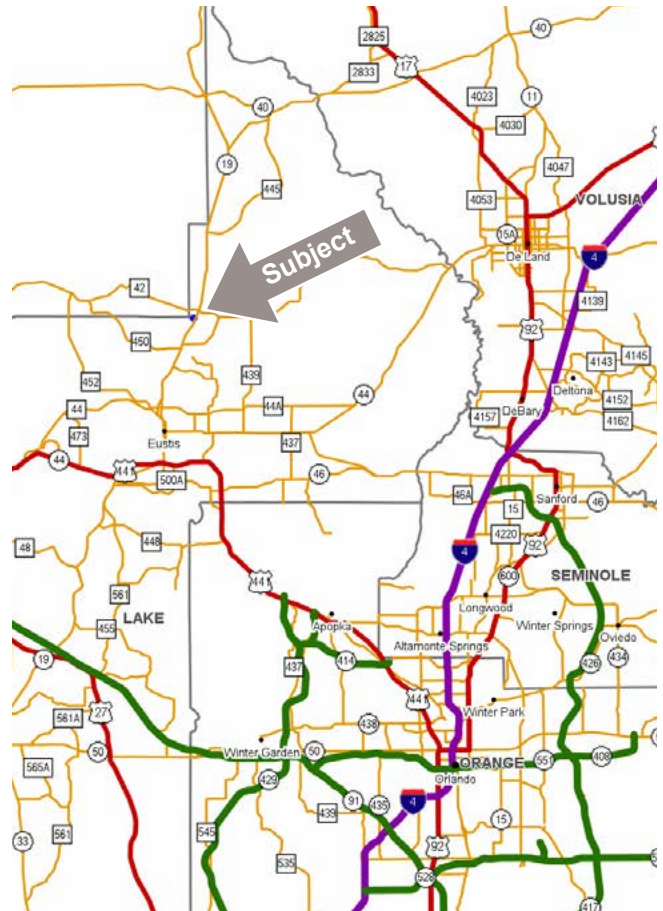
Driving Directions:

- From Umatilla go North on FL 19 to Keene Rd
- Turn left and the property is on the left.

Showing Instructions: Please contact the listing agent to schedule a showing time.



Previously Approved for 40 Lots!





Saunders

REAL ESTATE

863.648.1528
114 N. Tennessee Ave.
3rd Floor
Lakeland, FL 33801

18.3 ± Acres • Residential Development Ready to Develop
Located 18 Miles to The Villages, 30 Miles to Orlando and 35 Miles to Disney.
40 ± Previously Approved Lots!

SREland.com/NorthLake

Carson Futch 863.216.5913 | CFutch@SREland.com
Eric Ammon, CCIM 863.272.7135 | EAmmon@SRDcommercial.com



LAKELAND OFFICE:
114 N. Tennessee Ave. 3rd Floor
Lakeland, FL 33801
863.648.1528 - Main Office

HIGH SPRINGS OFFICE:
P.O. Box 809 (32655)
18622 NW US 441
High Springs, FL 32643

©2018 Coldwell Banker Commercial Saunders Real Estate. All rights Reserved, Worldwide. Every attempt is made to provide accurate information on this property, however, COLDWELL BANKER COMMERCIAL SAUNDERS REAL ESTATE (CBCSRE) does not guarantee the accuracy. Buyer should rely entirely on their own research, inspection of property, and records.
©2018 Coldwell Banker Real Estate LLC, dba Coldwell Banker Commercial Affiliates. All Rights Reserved. Coldwell Banker Real Estate LLC, dba Coldwell Banker Commercial Affiliates fully supports the principles of the Equal Opportunity Act. Each Office is Independently Owned and Operated. Coldwell Banker Commercial and the Coldwell Banker Commercial Logo are registered service marks owned by Coldwell Banker Real Estate LLC, dba Coldwell Banker Commercial Affiliates.



120318-A