

PLANT CITY - COUNTRY HOMESITE

PLANT CITY, FL | HILLSBOROUGH COUNTY

9.5 ± ACRES TOTAL





SPECIFICATIONS & FEATURES

Acreage: 9.5 ± acres

Sale Price: \$229,000

Price per Acre: \$24,105

Site Address: 0 Sparkman Rd, Plant City, FL 33565

County: Hillsborough

Road Frontage: 225 ± ft

Predominant Soil Types: Mostly Malabar, Winder and Myakka Fine Sands

Uplands/Wetlands: 7.6 ± acres Uplands / 1.8 ± acres Wetlands

Grass Types: Previous Use - Farmland

Taxes: \$233.31 (2018)

Zoning: AS-1 Agricultural - (Single-Family) / R-1 (Residential-1)

General Points of Interest: Close to Everything in Tampa Bay and Lakeland Area

Plant City - Country Homesite is a beautiful property perfect to build your dream home! The land features a downward slope from the front to the rear conventional for a home building site. This 9.5 ± acre site has plenty of room for multiple uses such as club animals, vegetable gardening, horses and cattle. A unique hardwood creek bottom runs through the property along the south end and to the west corner and adds a relaxing feature to the site. Located just 20 minutes to Brandon, 25 minutes to Lakeland and 40 minutes to Tampa. This is a great site in a desirable area minutes away from big city amenities like shopping or restaurants.



LOCATION & DRIVING DIRECTIONS

Parcel IDs: PIN # U-10-29-22-ZZZ-000004-90360.0
Folio# 091823-0000

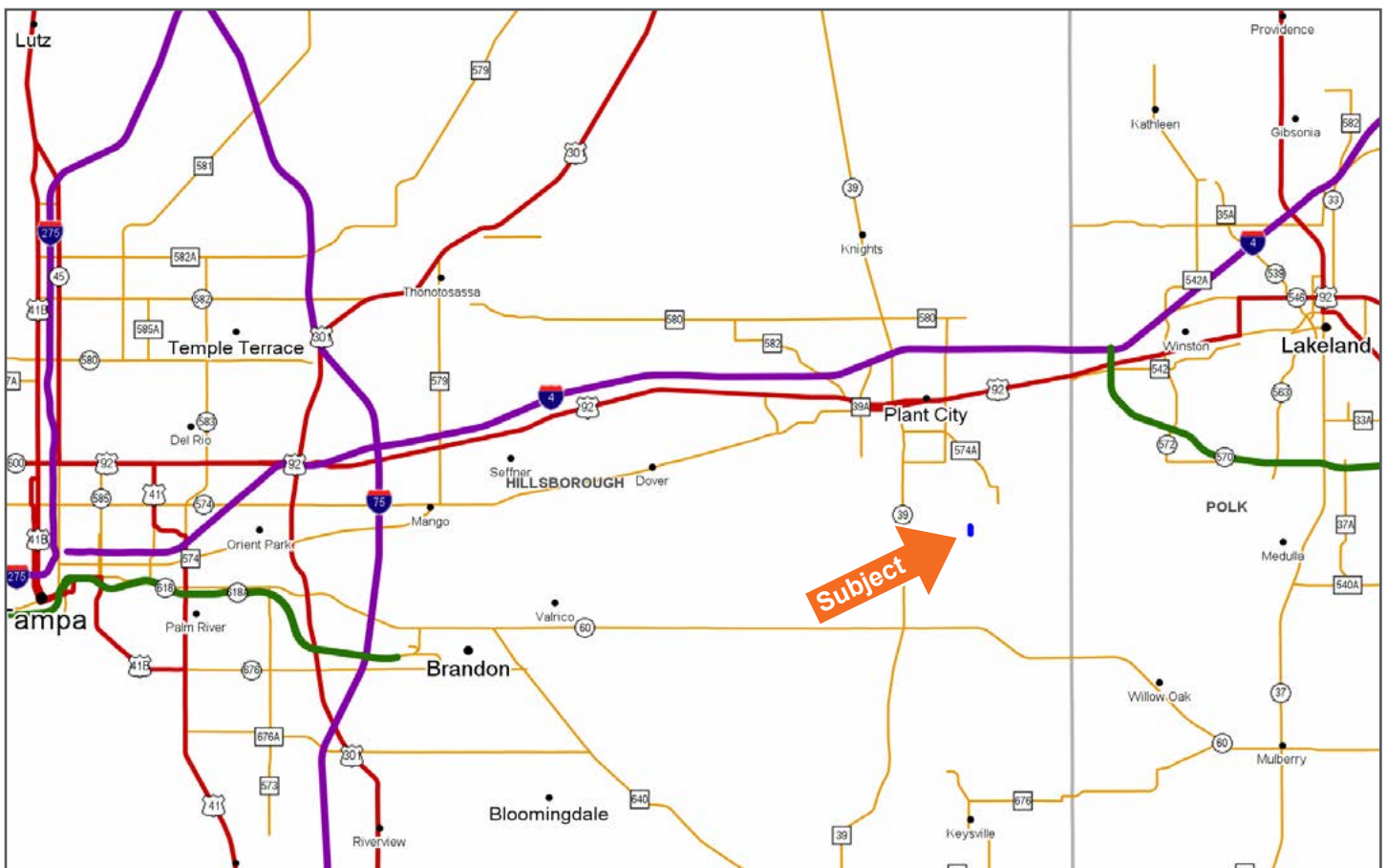
GPS Location: -82.09433, 27.97126

Driving Directions:

- From Plant City - Jim Redmond Parkway South to Sparkman Rd and go East 1.6 miles and the property will be on the right.
- From Lakeland - County Line Rd to Ralston Rd and go West to South Wiggins Rd then continue straight onto Sparkman Rd go 1.9 miles and property will be on the left.

Showing Instructions: Contact Carson Futch for more information.

Located just 20 minutes to Brandon, 25 minutes to Lakeland and 40 minutes to Tampa.





114 N. Tennessee Ave.
3rd Floor
Lakeland, FL 33801

9.5 ± Acres • Beautiful property perfect to build your dream home!
Plenty of room for multiple uses such as club animals, vegetable gardening, horses and cattle.
Located just 20 minutes to Brandon, 25 minutes to Lakeland and 40 minutes to Tampa.

Visit SVNsaunders.com and search for, Country Homesite

Carson Futch, 863.216.5913 | Carson.Futch@SVN.com



LAKELAND OFFICE:
114 N. Tennessee Ave. 3rd Floor
Lakeland, FL 33801
863.648.1528 - Main Office

LAKE CITY OFFICE:
356 NW Lake City Avenue
Lake City, FL 32055
386.438.5896

©2019 SVN | Saunders Ralston Dantzler Real Estate. All SVN® Offices Independently Owned and Operated
Saunders Ralston Dantzler Real Estate is regarded as an authority on all types of Florida land and
conservation easements, transacting over \$2.5 billion in sales since 1996. Offering land, forestry, and
conservation easement real estate services through Saunders Ralston Dantzler Real Estate and the
Saunders Real Estate Forestry Group, the Saunders team of land professionals offers advisory and
transactional services through their home office in Lakeland, FL, the North Florida office in Lake City,
FL, and the South Georgia office in Thomasville, GA. We provide services to land and commercial clients
through our commercial real estate brokerage, Saunders Ralston Dantzler Real Estate.

